

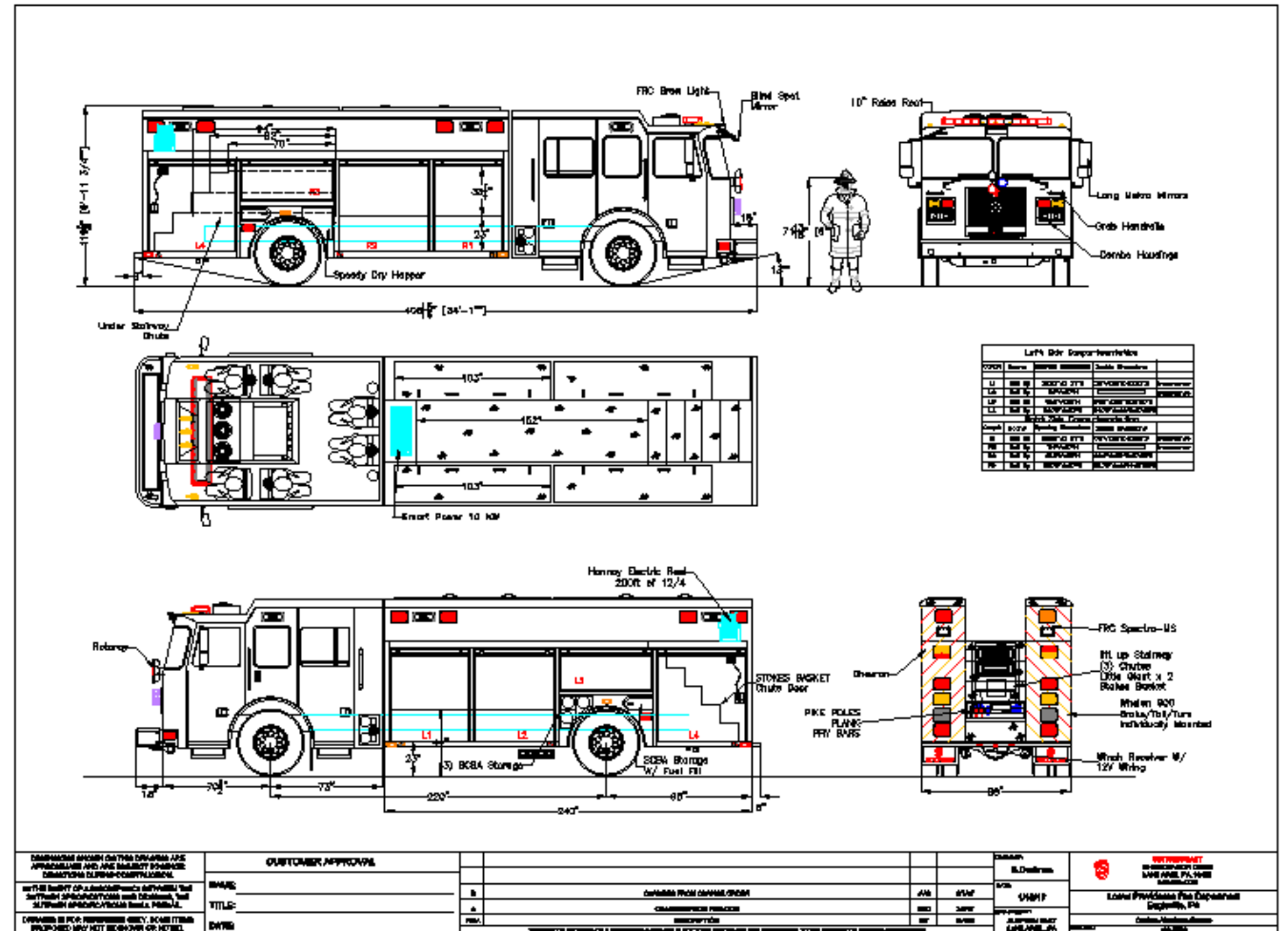
# SUTPHEN EAST ENGINEERING



# RESCUES

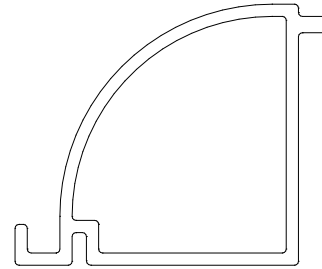
## (HS 6026 LOWER PROVIDENCE, PA)

- 73" CAB/ 10" RAISE ROOF
- 20 FT ALUMINUM BODY (220" WB)
- 18" FRONT BUMPER WITH WINCH STORAGE
- APPROX 700 CU.FT. OF STORAGE
- REAR STAIRCASE WITH STORAGE CHUTES
- TWO TRANSVERSE COMPARTMENTS
- NEW 3 BOTTLE AND SPEEDY DRY FENDER COMPARTMENTS
- NEW COFFIN EXTRUSION

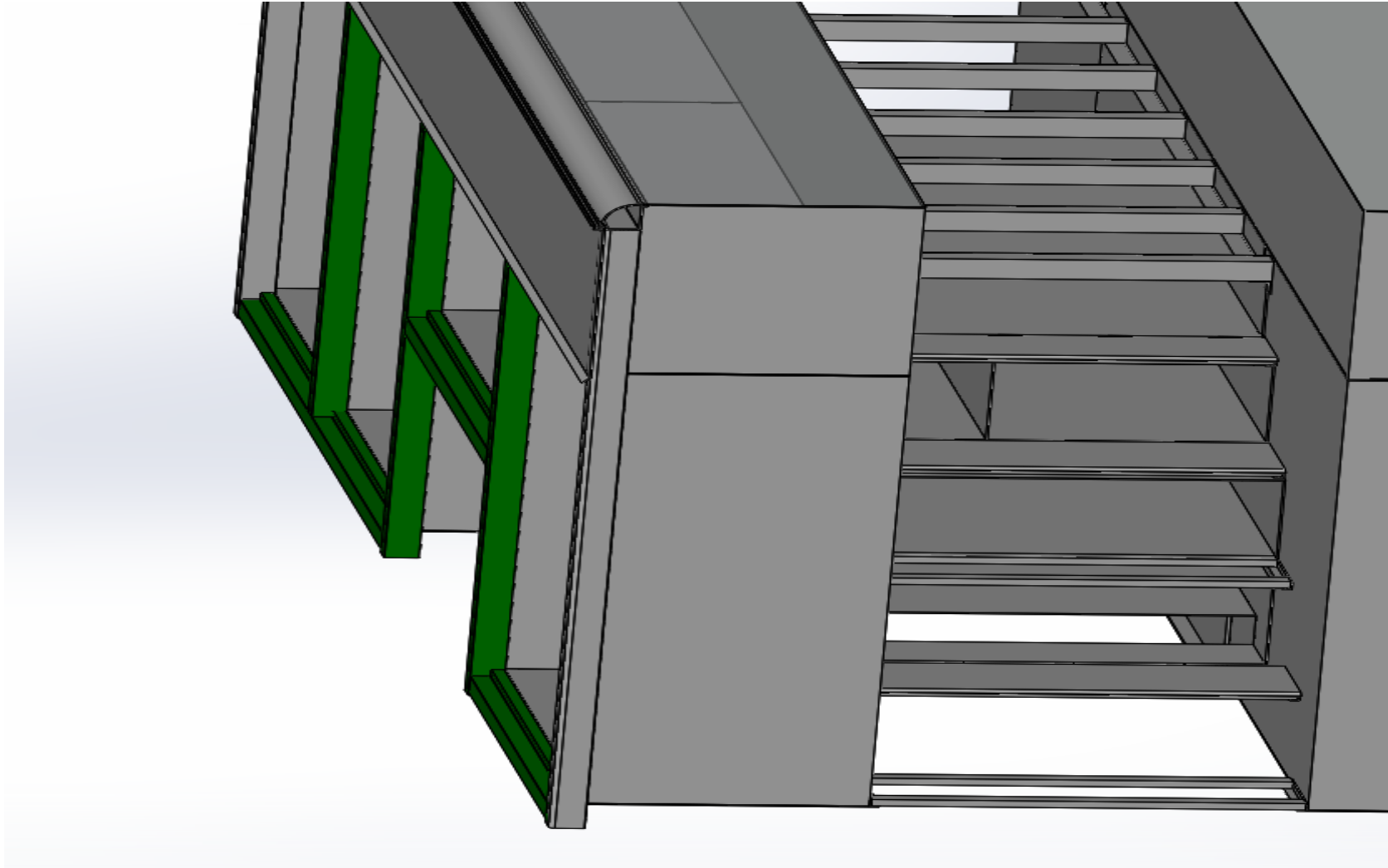


# NEW COFFIN EXTRUSION

- ORIGINAL DESIGN LEFT THE COFFINS SQUARED IN FRONT AGAINST A ROUND CAB ROOF
- NEW EXTRUSION ALLOWS COFFINS TO MATCH THE CAB ROOF AND ALLOWS THE COFFIN SKIN TO BE WELDED ON ALL 4 SIDES
- BUILT-IN RAIN GUARD
- EASIER CONSTRUCTION OF COFFIN LIDS



# 3D MODEL WITH NEW EXTRUSION



# CONSTRUCTION OF RESCUE BODY





# PRE-PAINT

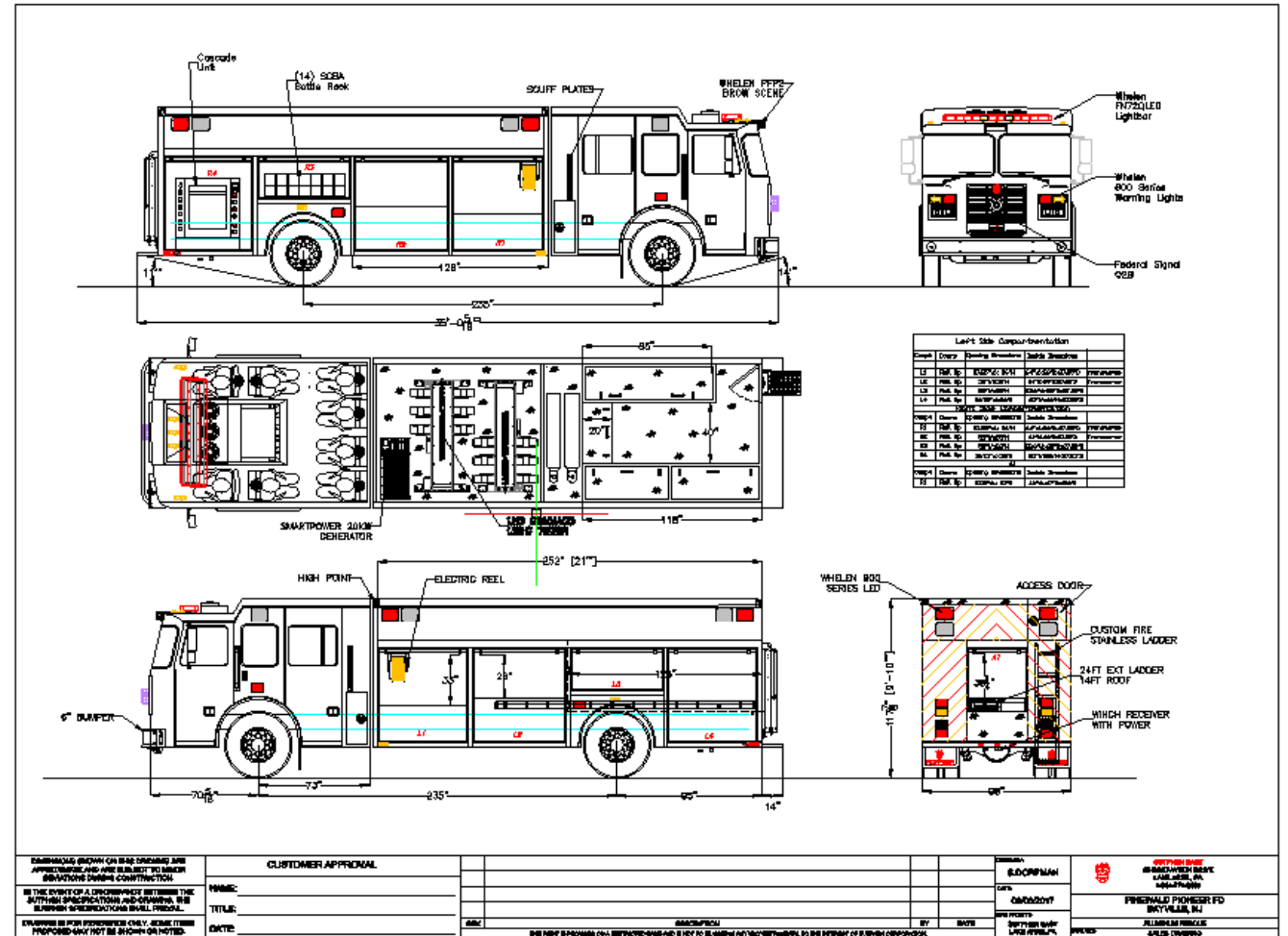


# STAIRWAY



# OTHER RESCUE CONCEPT

- CUSTOM FIRE OR ZIAMATIC LADDER ON REAR
- HINGE DOOR SWINGING INWARD
- LARGE REAR COMPARTMENT FOR LADDERS/ TRIPODS/ PARATECH STRUTS/ CRIBBING
- CASCADE SYSTEM
- 21 FT BOX





# FUTURE DESIGNS

- NEW BODY MOUNTING SYSTEM
- TOW EYE AND RECEIVER CAPACITY TESTING
- TANDEM RESCUE DESIGN

# 2017 2 DOOR COMMERCIAL CHASSIS

- NEW YEAR MODELS AND NEW ENGINES/EMISSION CAUSED CHANGE IN COMMERCIAL CABS
- 2" CLEARANCE OFF THE BACK OF THE CAB IS NOT LONGER AVAILABLE.
- DEPENDING ON CHASSI MFG, GAP CAN BE FROM 5"-7"

