



STB-0102 – Auxiliary Cab Step Adjustments and Improvements

OVERVIEW

Please note the revision to STB-0102.

The information found in STB-0102 only applies to trucks with auxiliary steps. Trucks without auxiliary steps will not be affected. Trucks without auxiliary steps will continue with the typical cab step spacing.

Beginning in the fall of 2024 Sutphen will be making three adjustments to its cab step arrangement when spec'd with an auxiliary cab step. You can see the list of these adjustments below:

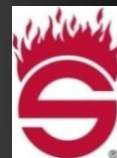
- *Sutphen will raise auxiliary cab steps by one inch from their current position.*
- *Sutphen will reduce the fixed-cab step's width by over one and a half inches.*
- *Sutphen will increase grip tread height on the fixed-cab step by three inches.*

Each adjustment listed above creates a significant improvement to the customer's experience. You can see the subsequent improvement to each adjustment listed below:

- *Raising the auxiliary cab step by one inch will increase apparatus' angle of approach.*
- *Reducing the fixed-cab step's width by over one and a half inches will bring the step face closer to the cab. This will help eliminate boot snagging points and allow Sutphen apparatus steps to accommodate the increasing size of firefighter boots.*
- *Increasing the grip tread height of the fixed cab step by three inches will create a more consistent spacing between steps.*

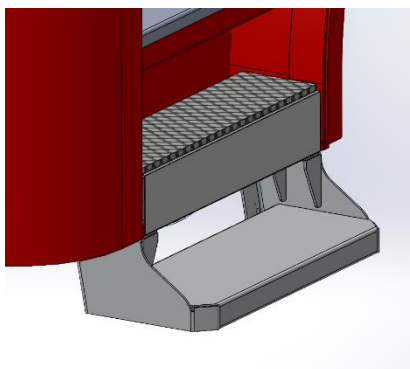
You can visually see these auxiliary cab step adjustments and improvements via the graphics on the next page.

- more -

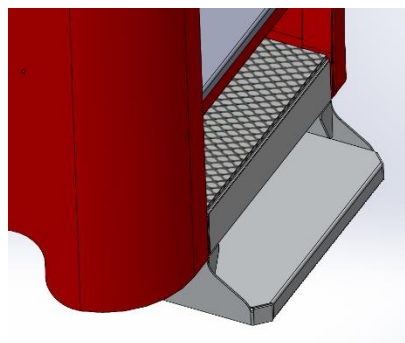


STB-0102 – Auxiliary Cab Step Adjustments and Improvements (Cont....)

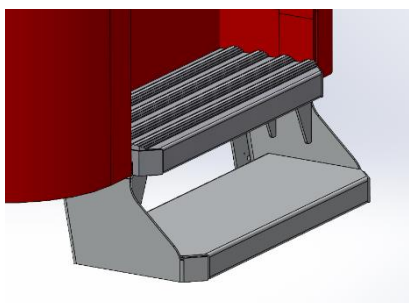
OVERVIEW



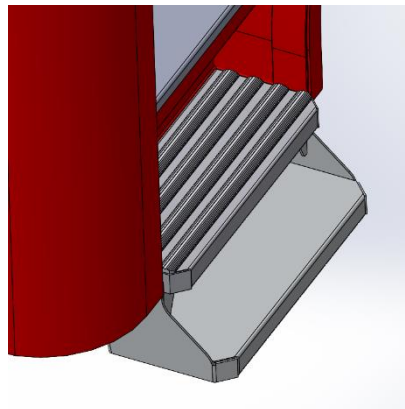
New Auxiliary Cab Step Arrangement



New Auxiliary Cab Step Arrangement



Old Auxiliary Cab Step Arrangement



Old Auxiliary Cab Step Arrangement

Upon implementation, these adjustments will become standard for trucks with the auxiliary cab step arrangement.

If you have questions, please reach out to your STM.

###