



STAINLESS STEEL BODY COMPARTMENT TOPS

OVERVIEW

The Sales Department would like to inform the dealer network that the following changes have been made to the SA75's, SL75's and SP70's aerial body. These units will now have 304 brushed stainless steel compartment tops as standard. Starting with HS-6176 the following surfaces have been updated.

- Officer's side compartment tops
- Driver and Officer's side pike pole plates
- Front of body trim plates
- Officer's side interior hose bed wall.

The benefits of this change include:

- Improved prevention of water intrusion by using overlapping flanges to seal body seams that were susceptible to leaks.
- Reduce corrosion by eliminating dissimilar metals
- Reduced manufacturing costs

OFFICERS SIDE - COMPARTMENT TOP

PREVIOUS INSTALL



UPDATED INSTALL





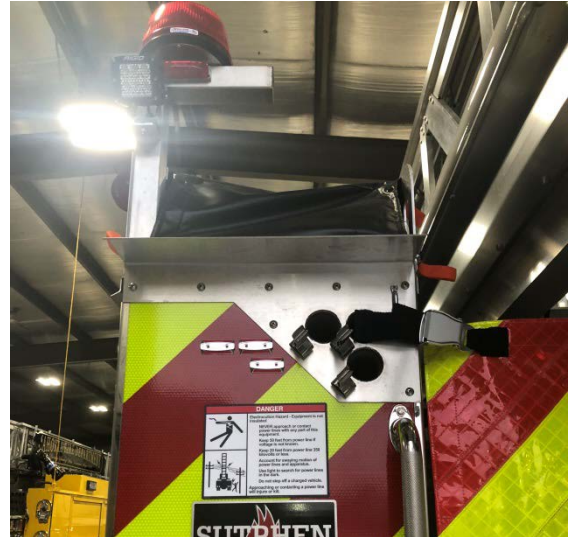
STAINLESS STEEL BODY COMPARTMENT TOPS

DRIVER'S SIDE – PIKE POLE BRACKET PLATE

PREVIOUS INSTALL



UPDATED INSTALL



OFFICER'S SIDE – RECESSED PIKE POLE BOX

PREVIOUS INSTALL



UPDATED INSTALL





STAINLESS STEEL BODY COMPARTMENT TOPS

DRIVER'S SIDE – TOP OF BODY COMPARTMENT ANGLE



OFFICER'S SIDE – TOP OF BODY COMPARTMENT ANGLE

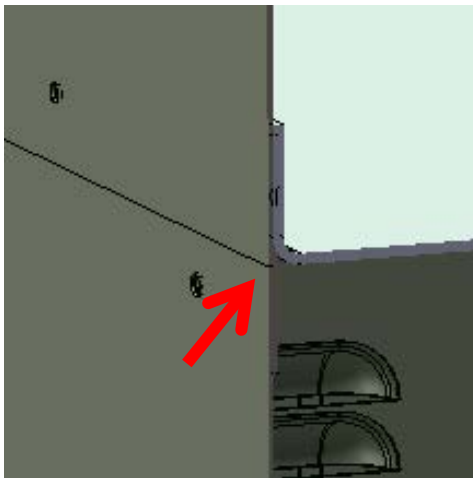




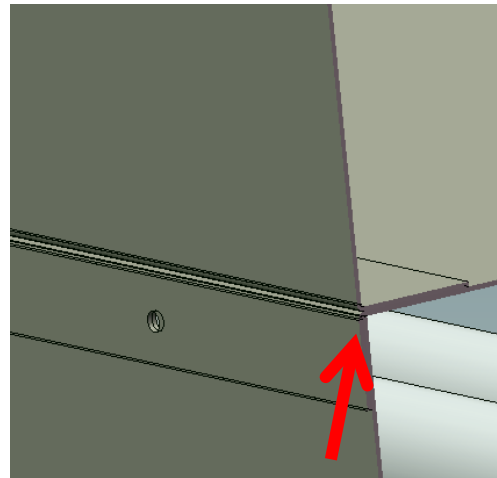
STAINLESS STEEL BODY COMPARTMENT TOPS

OFFICER'S SIDE – WALL OF INTERIOR HOSEBED

PREVIOUS MODEL



UPDATED MODEL



These images are computer generated models depicting the close up differences.

PREVIOUS INSTALL



UPDATED INSTALL



These images are showing actually installs.



STAINLESS STEEL BODY COMPARTMENT TOPS

DRIVER'S/OFFICER'S SIDE – REAR 2" x 2" STANCHION POSTS

Sutphen has also improved the overall design of the driver's / officer's rear stanchion posts.

The stanchion no longer protrudes through the body thus reducing the risk for water penetration. The stanchion will be welding to angle, and bolted to the top of the body. The image on the right shows the interior of the compartment with a single hole for wiring to run up through the stanchion. This will help eliminate leak points at rear stanchion posts.



Production and the Sales Team will continue to keep the dealer network updated on any current and future changes. If you have any questions or concerns in the meantime, please contact your Sales Territory Manager directly.