



FOAM TRAINING

Rod Riska

SmartFOAM



GODIVA®

Class 1



- **How Foam Systems Work**
- **Flushing Foam Systems and Routine Maintenance**
- **Foam Calibration**
- **Smart Foam Features**
- **SmartFOAM Passwords**
- **Video Availability**
- **Hands on Display**



GODIVA 

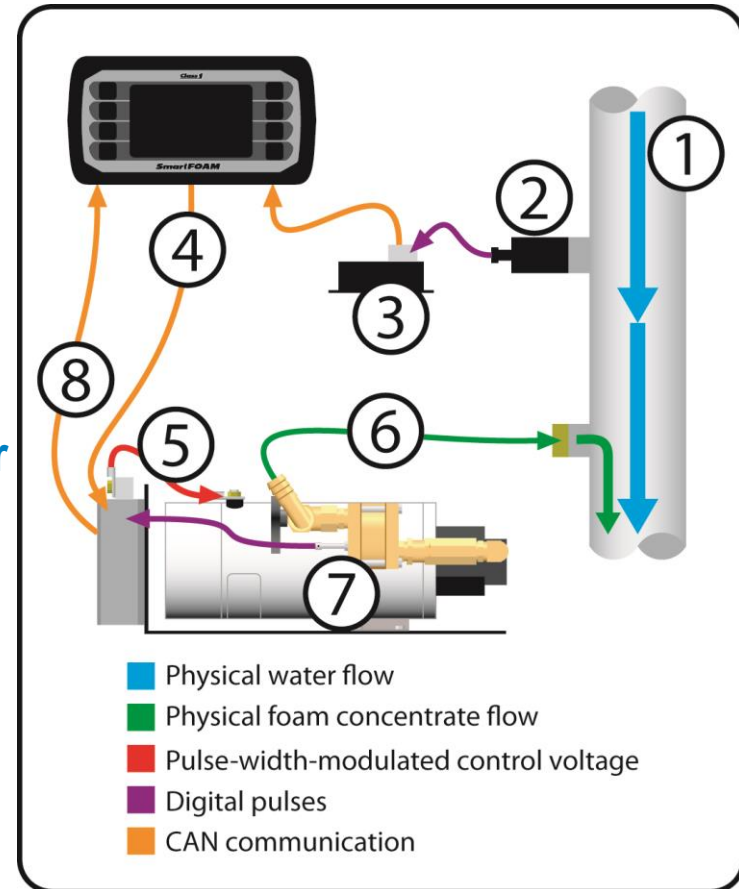
Class 1 



Foam Injection

Theory of Operation

1. Water flows past water flow sensor
2. Pulses are sent to sensor module
3. Sensor module transmits CAN data to the SmartFOAM controller
4. SmartFOAM calculates desired foam rate and transmits CAN request to motor driver
5. Motor driver send PWM control to motor
6. Foam pump begins discharging foam
7. Foam flow sensor sends pulses to motor driver
8. Motor driver transmits CAN message indicating foam flow rate





Flushing Foam System

Approved Class “A” foam concentrates do not deteriorate rapidly like Class “B” concentrates. As long as an approved Class “A” foam concentrate is used and the system is operated within 10-12 weeks no flushing is required. When Class “B” foam concentrate is used, always FLUSH the system, then switch back to Class “A



GODIVA®

Class 1



Tank Selector is used for flushing the system, switching between different on foam sources.

“M” or “A” denote Manual or Air operation.

“S” is for single tank/Flush installations

“D” is for dual tanks/flush installation

Bypass is included on every unit. “**Bypass Only**” is used when an OEM chooses their own system flush/tank selector



MST



BYPASS



ADT



MDTII



Routine Maintenance

Foam Strainer provide protection to the foam pump.

Inline Strainer is an economical strainer solution for “non-flush” applications

FS Style (FS15 and FS25) is used for flushing applications

FS15 (1.5”) version is for Class A Foam A Only

FS25 (2.5”) version is Class A or B Foam compatible



Inline Strainer



FS style strainer (1.5” or 2.5”)

Things to Remember

Flush After
Every Use
if Using B
Foam

Don't Mix
Class A and
Class B
Foam

Check
Strainers

Run Units
Regularly

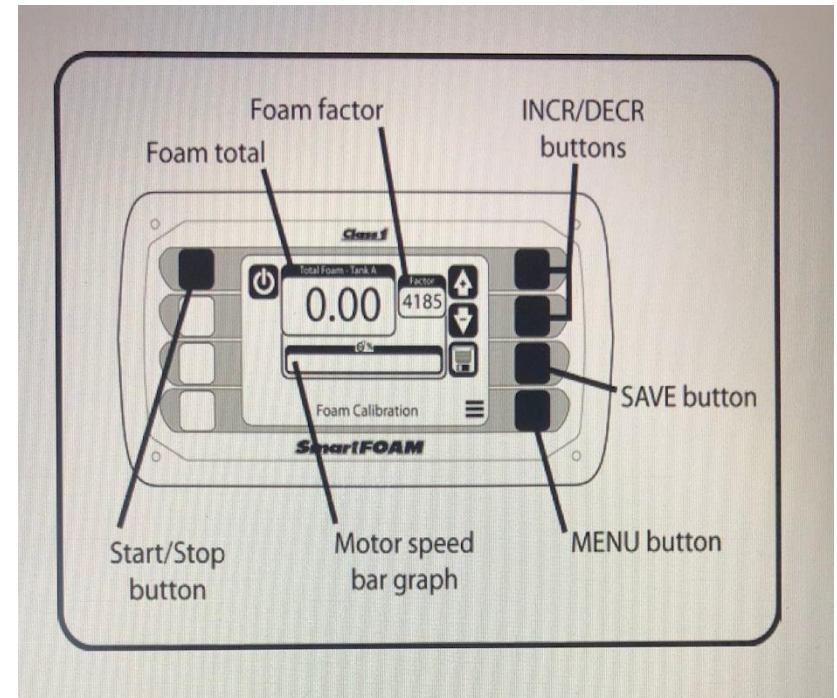




Foam Calibration

Enter the password "1560". The controller will show the foam flow calibration screen.

1. Set the bypass valve's handle to **BYPASS**.
2. Place a graduated measure container at the outlet of the bypass hose capable of containing the expected volume of foam concentrate: 5 gallons (19 liters) minimum.
3. Start the Hale SmartFOAM foam pump by pressing the **ON/OFF** button.
4. Watch the level of foam in the graduated measure container and stop the foam pump when at the desired level by pressing the **ON/OFF** button again.
5. Adjust the reading on the display to match the actual volume by using the **INCR** and **DECR** arrow buttons.
6. Press the **SAVE** button.
7. Repeat the procedure to verify that the setting is correct.
 - a. Press the **SAVE** button again if the value was modified.
8. Set the bypass valve's handle back to **INJECT**.





Section 1 Foam Performance

Model (12 or 24 volt)	Max Foam Flow Rate (GPM)	Max Injection Pressure (PSI)	Max Water Flow - GPM (0.1% Foam injection)	Max Water Flow - GPM (0.3% Foam injection)	Max Water Flow - GPM (0.5% Foam injection)	Max Water Flow - GPM (1% Foam Injection)
1.7A HP	1.7	400	1700	566	340	170
2.1A	2.1	250	2100	700	420	210
3.3	3.3	400	3300	1100	660	330
5.0	5.0	250	5000	1666	1000	500
6.5	6.5	200	6500	2166	1300	650
Dual 6.5	13.0	200	13000	4333	2600	1300



Piston Pump
1.7 & 2.1



Gear Pump
3.3+





- ✓ **Class A only systems (1.7A and 2.1A)**
 - 1.7A for water flows up to **170 GPM** at 1.0% injection
 - 2.1A for water flows up to **210 GPM** at 1.0% injection
- ✓ **Class A/B systems (3.3, 5.0, and 6.5)**
 - 3.3 for water flows up to **330 GPM** at 1.0% injection
 - 5.0 for water flows up to **500 GPM** at 1.0% injection
 - 6.5 for water flows up to **650 GPM** at 1.0% injection
- ✓ **Class A/B dual-pump system (two 6.5s)**
 - For water flows up to **1300 GPM** at 1.0% injection





SmartFOAM utilizes UltraView display technology

- ✓ Continues operation during sensor failure
- ✓ Allows unmatched system configurability
- ✓ Touch screen and physical buttons
- ✓ Plain text warnings and instructions (multi-language capable)
- ✓ On-screen user tutorials
- ✓ Maintenance minder
- ✓ Multi-pump arrangements controlled by a single display
- ✓ Logs operational data

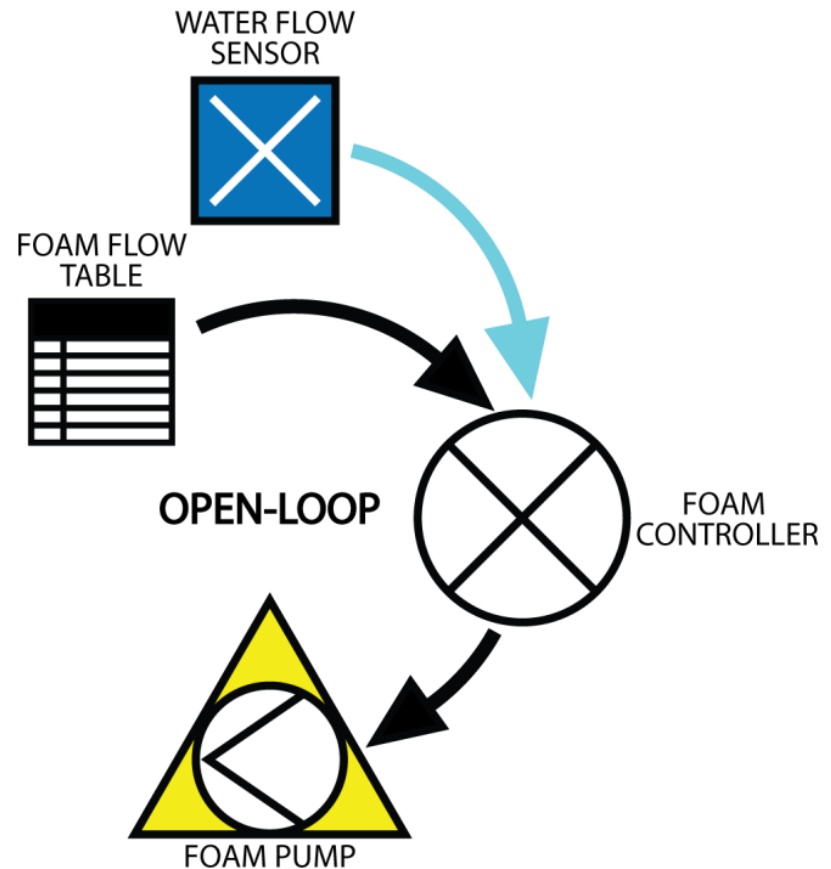




Continues Operation Even if Sensor Fails “Open Loop”

Water flowmeter reads water flow rate and sends that reading to the motor driver

1. User Turns on Foam System and sets desired Foam Percentage
2. Motor driver detects that no signal is coming from the foam flow sensor and sends error message to display “Check foam sensor”
3. System goes into “Open Loop” mode and uses a preprogrammed setting to run the electric motor for the current water flow rate.





Flexible display formats (configurable in menu)

- ✓ **SmartFOAM display format**

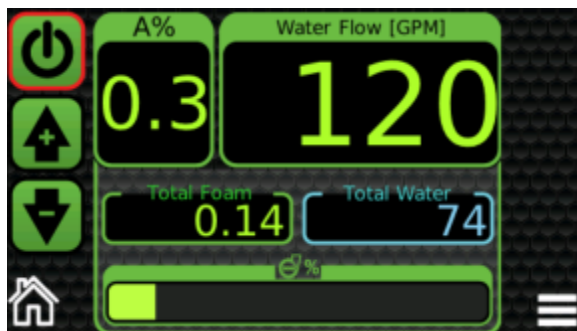
Modern look with all information displayed at once

- ✓ **FoamLogix display format**

Classic FoamLogix look – no training required for existing FoamLogix users

- ✓ **Simple analog display format**

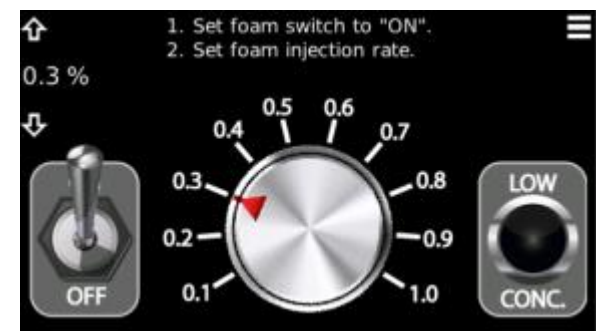
Basic foam system look



Modern



Classic



Basic



Up to six fully configurable presets

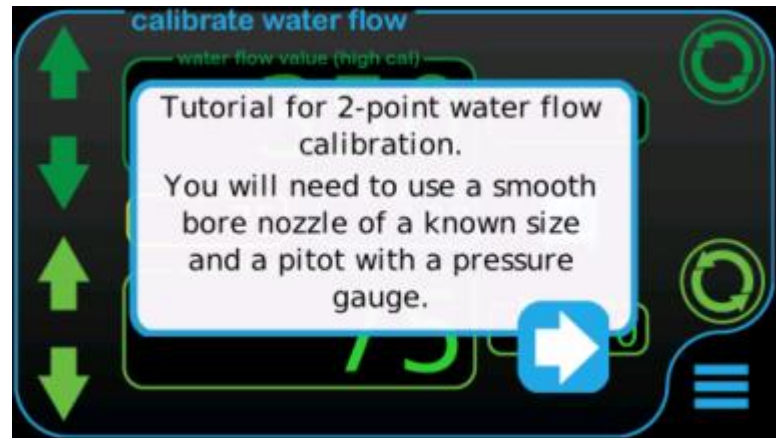
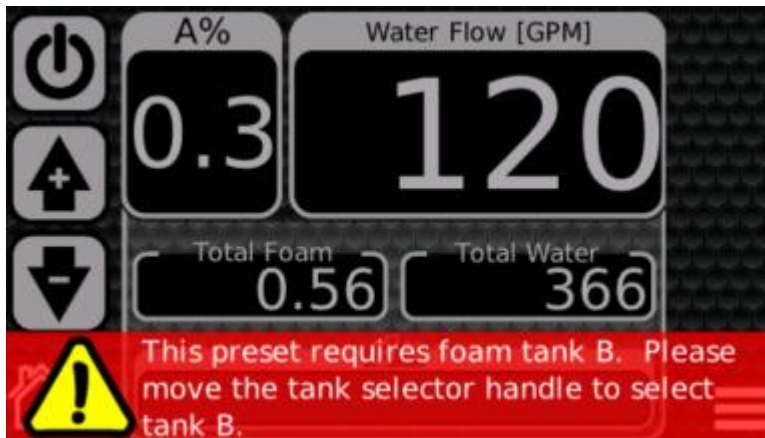
- ✓ Easily select the desired foam percentage per situation
- ✓ Colors, text, and foam percentage are configurable





Plain text warnings and instructions

- ✓ No cryptic warning messages to decode
- ✓ On-screen tutorials for calibration and configuration

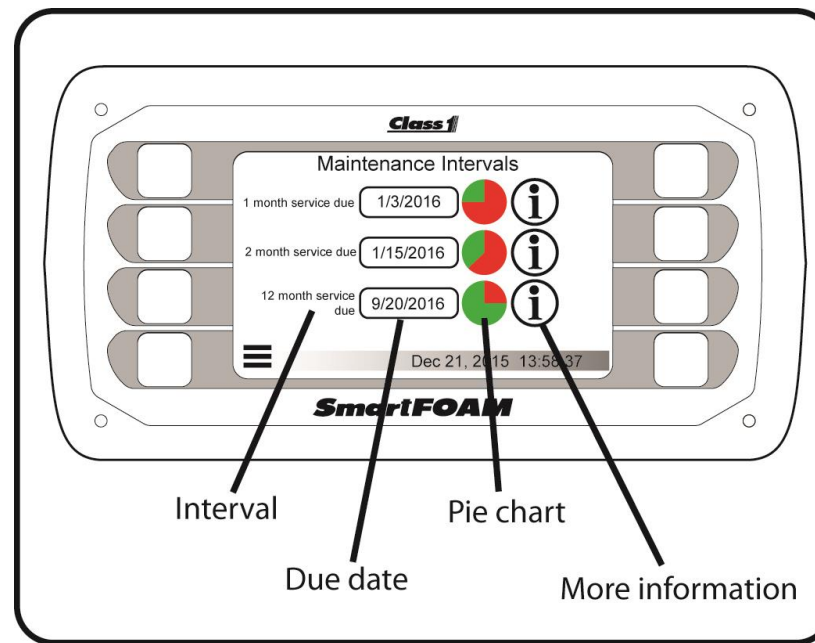




Maintenance Minder

✓ On-screen maintenance reminders

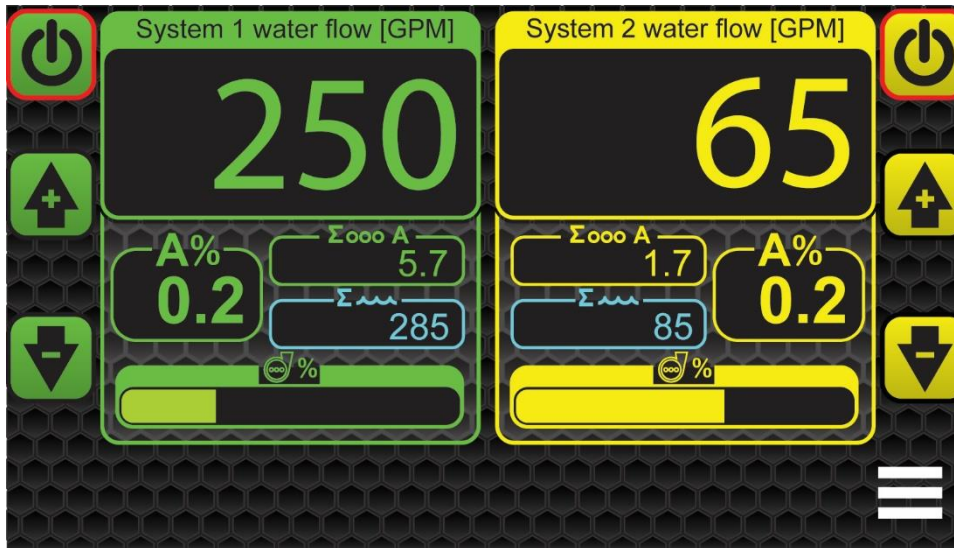
- Show due date
- Press the “i” button to see a detailed list of the maintenance items





Multi-pump arrangements

- ✓ **Control any two of our standard foam pumps (1.7A, 2.1A, 3.3, 5.0, 6.5) as two individual systems from a single display**
 - Perfect solution for apparatus with primary and auxiliary pumps
 - Common interface for both systems
 - Reduces pump panel space (single display)

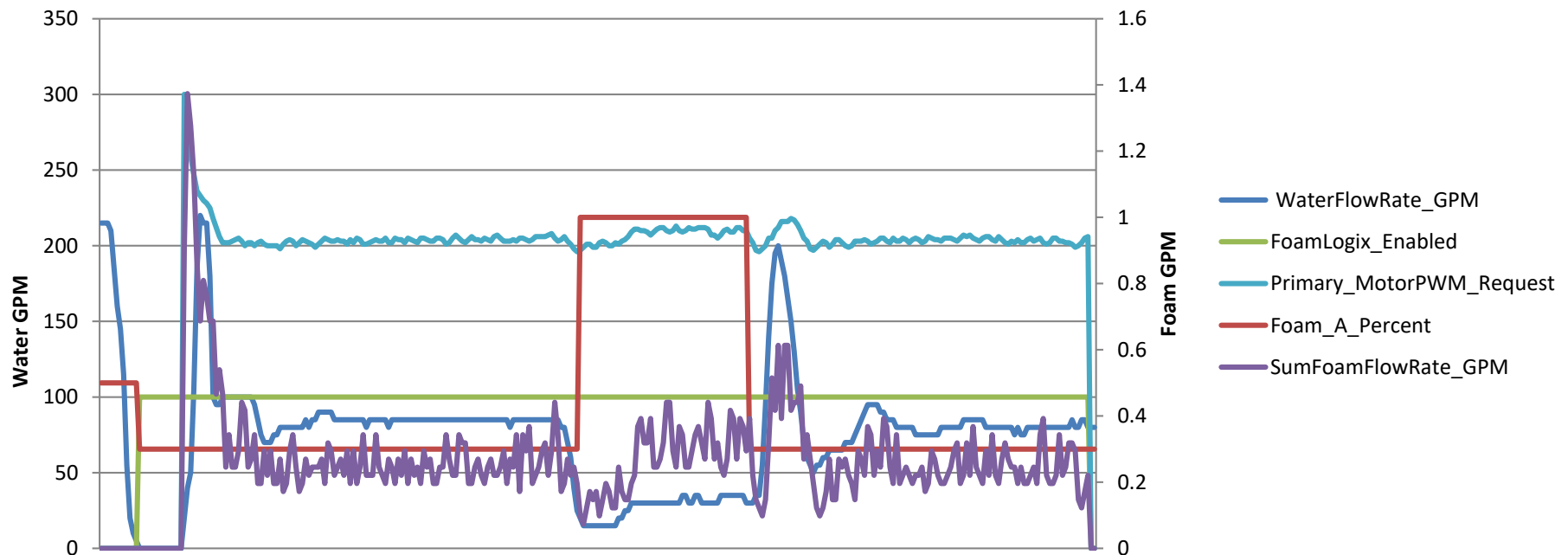




Logs operational data

✓ All data is logged and time-stamped for detailed analysis

- Data is logged every second
- Over 200 hours (rotating buffer, oldest data is overwritten)
- Validate water/foam usage
- Exports “comma separated value” (CSV) data to USB flash drive





SmartFOAM passwords

SmartFOAM passwords

1023 – Preset configuration

1849 - User menu

2314 - OEM menu

57643 - Factory menu

9999 - Maintenance Interval screen

1560 - Foam calibration

6679 - Water calibration

9766 - Direct water calibration

66876 – Dual motor amperage limit, Motor 1

66878 - Dual motor amperage limit, Motor 2

Save Pic of these on your phone





GODIVA®

Class 1



Video Guide









- **Main Screen**
- **Preset Setup**
- **Operation**
- **Calibration Settings**
- **Maintenance Minder**
- **Flushing Water System**
- **Dual System Setup**
- **Changing the Graphic Interface**



SmartFOAM

QUICKSTART VIDEO GUIDE

Use the QR Scanner on your phone or use the link provided to navigate to the video guide to setting up your system.

Menu Screens  <p>This guide shows how to navigate through the different screens on your SmartFOAM system.</p> <p>https://www.youtube.com/watch?v=ful4gNkyva8</p>	Maintenance Minder  <p>This guide shows how see the current maintenance status on your unit and which ones will need to be reset after the service has been performed.</p> <p>https://www.youtube.com/watch?v=sVW5JKOyCcc</p>
SmartFOAM Presets Setup  <p>This guide shows how to setup the presets on your SmartFOAM system. They can be changed to "A" or "B" foam and setup to match your SOR.</p> <p>https://www.youtube.com/watch?v=ilzchltMVUg</p>	Flushing Your System  <p>This guide shows how to flush your system after operation is complete.</p> <p>https://www.youtube.com/watch?v=IR52UWeQVds</p>
SmartFoam Operation  <p>This guide shows how to operate your SmartFOAM system.</p> <p>https://www.youtube.com/watch?v=plZ4JHvqSDM</p>	Dual System Setup  <p>This guide shows how to setup your foam system for dual pump operation when two foam pumps are present.</p> <p>https://www.youtube.com/watch?v=y0DhW1B9lho</p>
Calibration Settings  <p>This guide shows how to calibrate water, foam a, and foam b on your SmartFOAM system.</p> <p>https://www.youtube.com/watch?v=H2YRitCYwB4</p>	Changing the Graphic Interface  <p>This guide shows how to change the user interface of the operation screen from foamlogix, analog screen, or the new SmartFOAM screen.</p> <p>https://www.youtube.com/watch?v=vF2CLvstD4</p>

REV	DATE	DESCRIPTION	APVD	AUTHOR	PART NUMBER
A	10OCT2018	ORIGINAL RELEASE	JDF	JDF	FSG-INS-00057



- **Questions?**
- **Hands on Display**