



Family Owned and Operated Since 1890

# PRODUCT HIGHLIGHTS

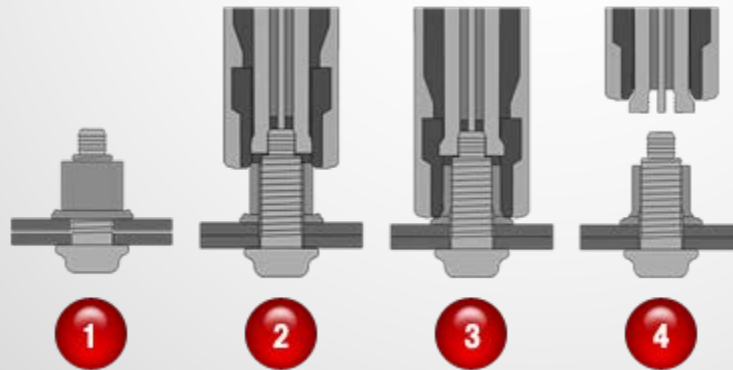
# CHASSIS FRAME RAILS

- 10 3/16" x 3 1/2" x 3/8" thick (13" optional)
- 50,000 psi or 110,000psi Domex Steel
- Treated with Cathacoat + Primer + Final Top Coat
- Single or Double Rail



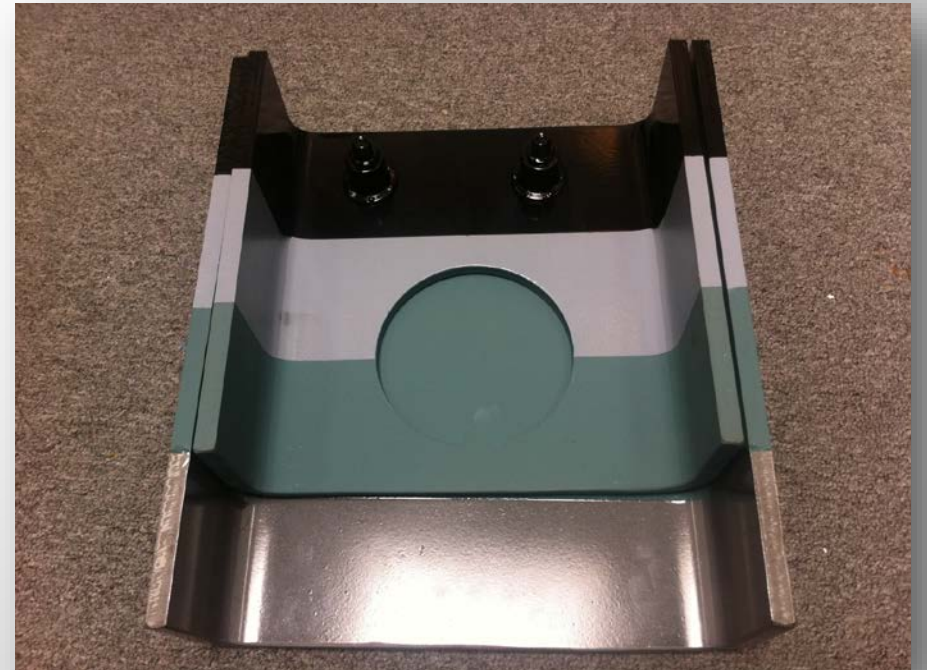
# HUCK® BOBTAIL® FASTENERS

- Used to attach cross members, suspension and other major components to the frame rails
- Do not require torquing and will not work loose (maintenance free)



# CATHACOAT® 302HB

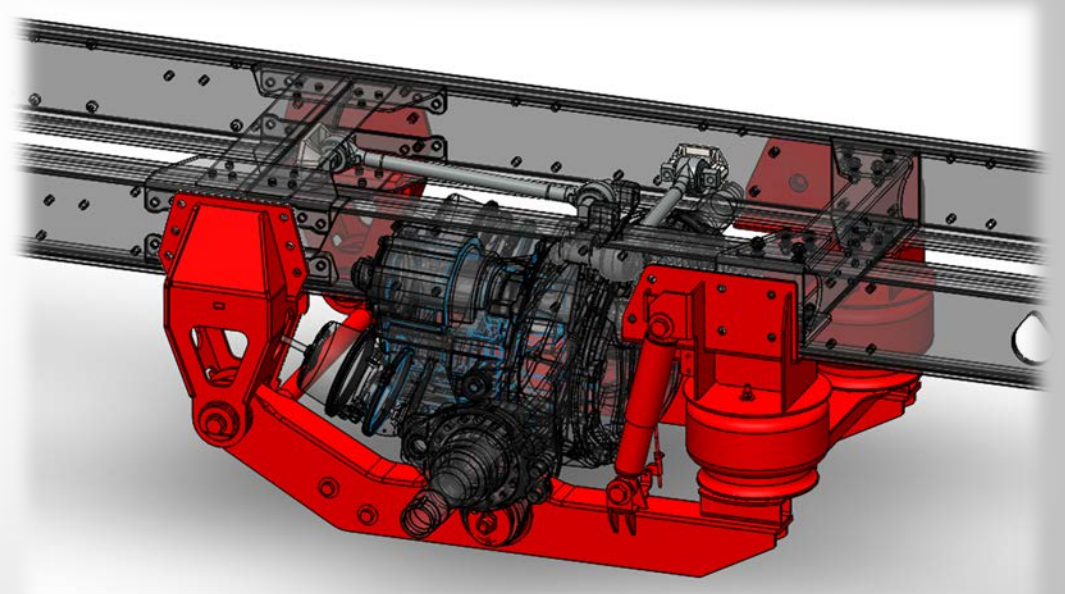
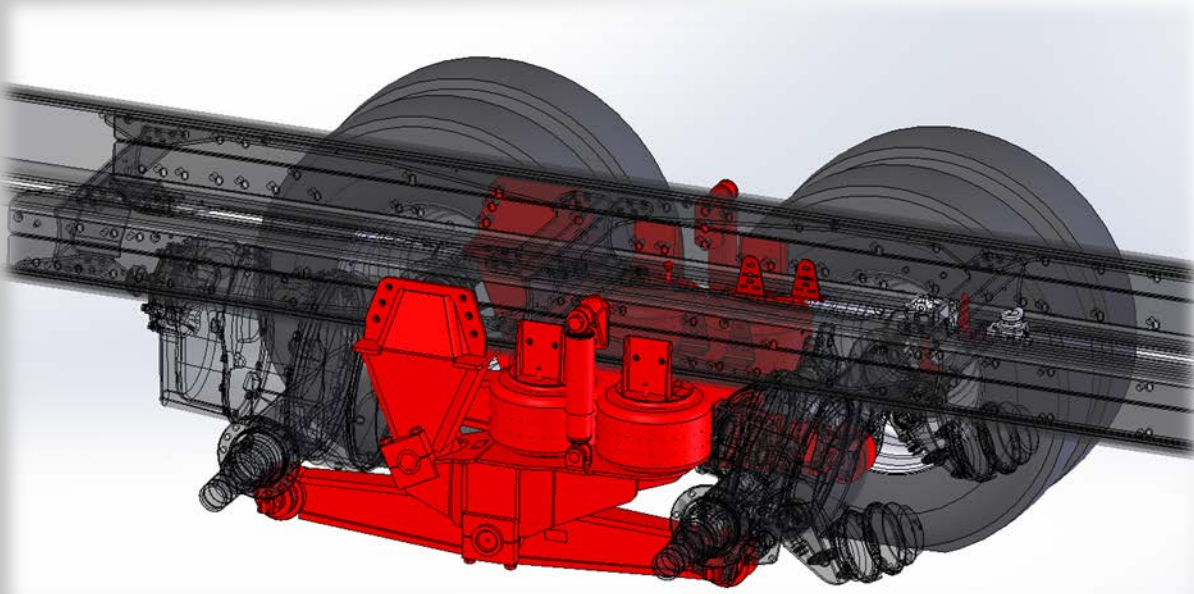
- High performance reinforced inorganic zinc-rich primer
- Provides exceptional corrosion resistance & cathodic protection in severe industrial environments
- Used to coat chassis components, aerial turntables, and other steel parts prior to priming and final top coat for unmatched corrosion protection





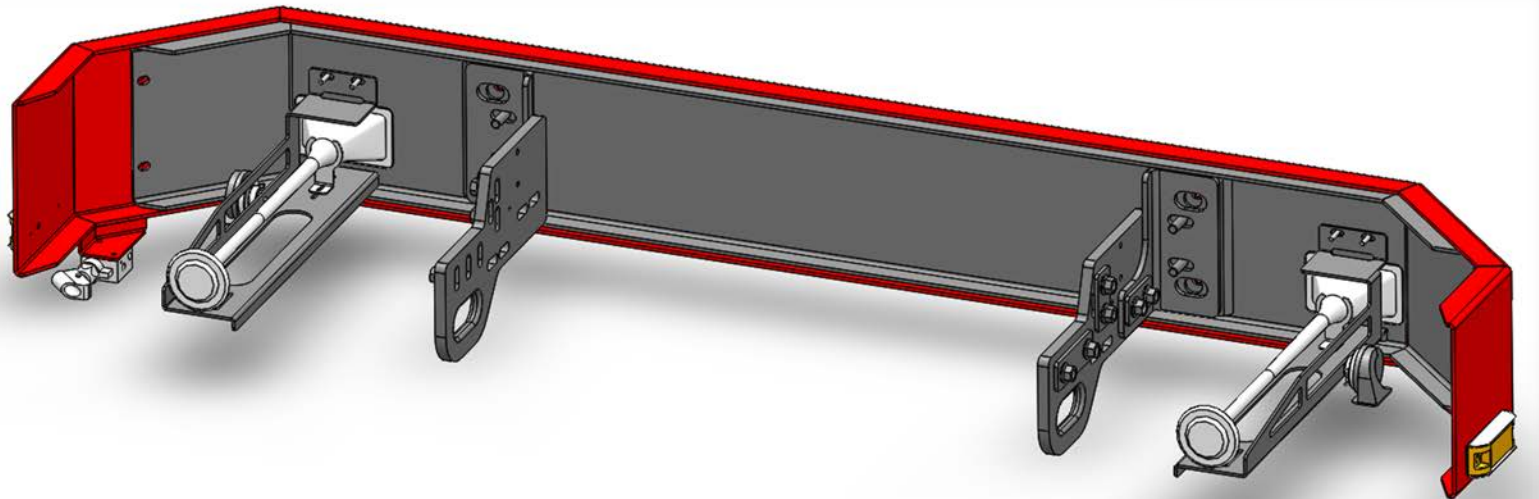
# AIR RIDE SUSPENSION (AERIALS)

- All Sutphen aerial apparatus come **STANDARD** with air ride rear suspension.



# EXTREME DUTY BUMPERS

- 1/4" thick steel reinforcement behind 10 gauge stainless steel **-OR-** 1/4" thick painted steel outer skin
- 3/4" thick steel bumper extensions with integrated tow eyes (chamfered openings)
- Extensions from 6" to 30" to accommodate numerous storage options



# STAINLESS STEEL GRILLE & LIGHT HOUSINGS

- Front cab grille and light housings are 304 14-gauge stainless steel (no plastic).





# EXTREME DUTY ALUMINUM CAB

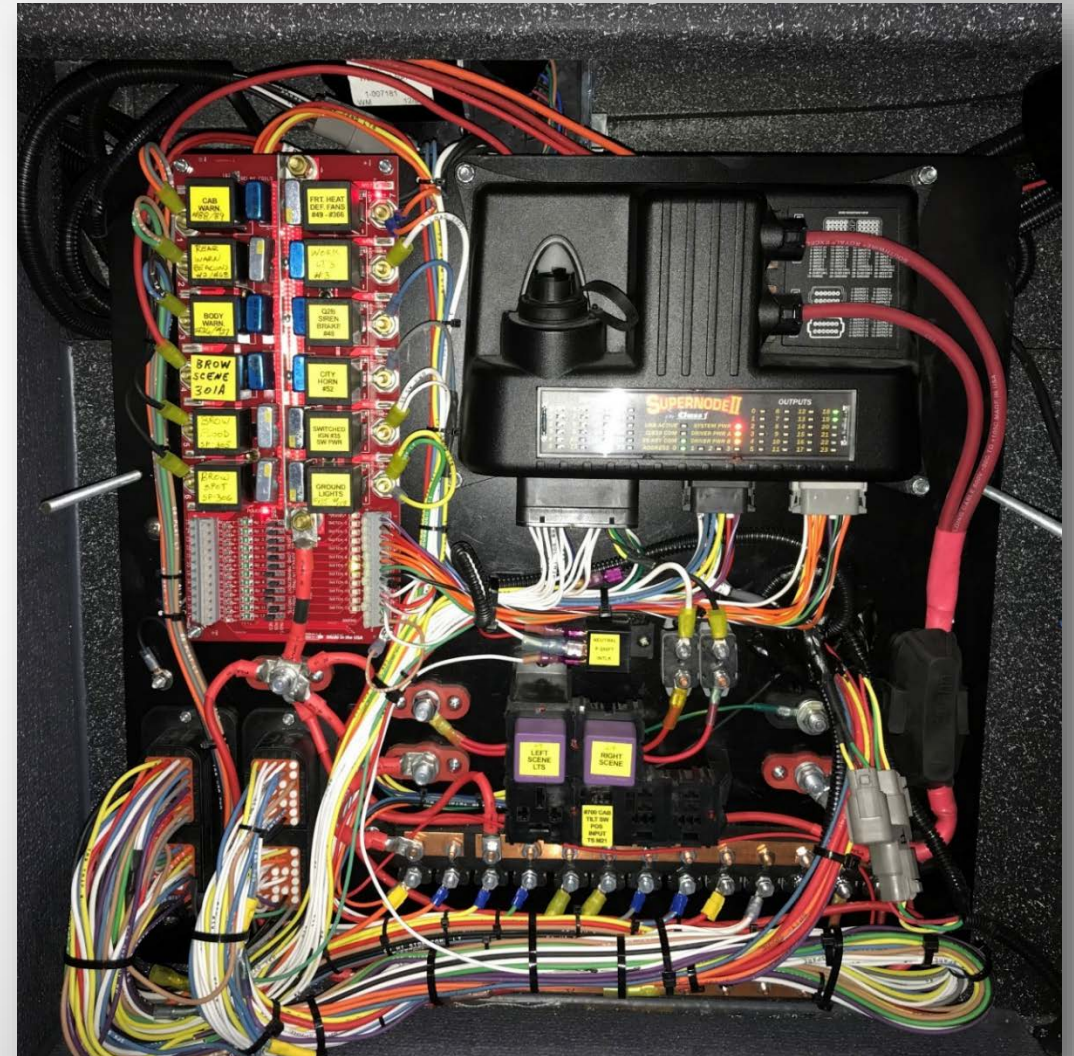
- Constructed with 6061-T6 aluminum extrusions and 1/8" to 3/16" thick 5052-H32 aluminum outer skins
- 1/4" thick 5052-H32 aluminum floor
- 36", 56", 62", 73", and 90" cab lengths (98" wide)
- Flat, 10", 15", and 20" raised roof configurations





# CAB ELECTRICAL DISTRIBUTION PANEL

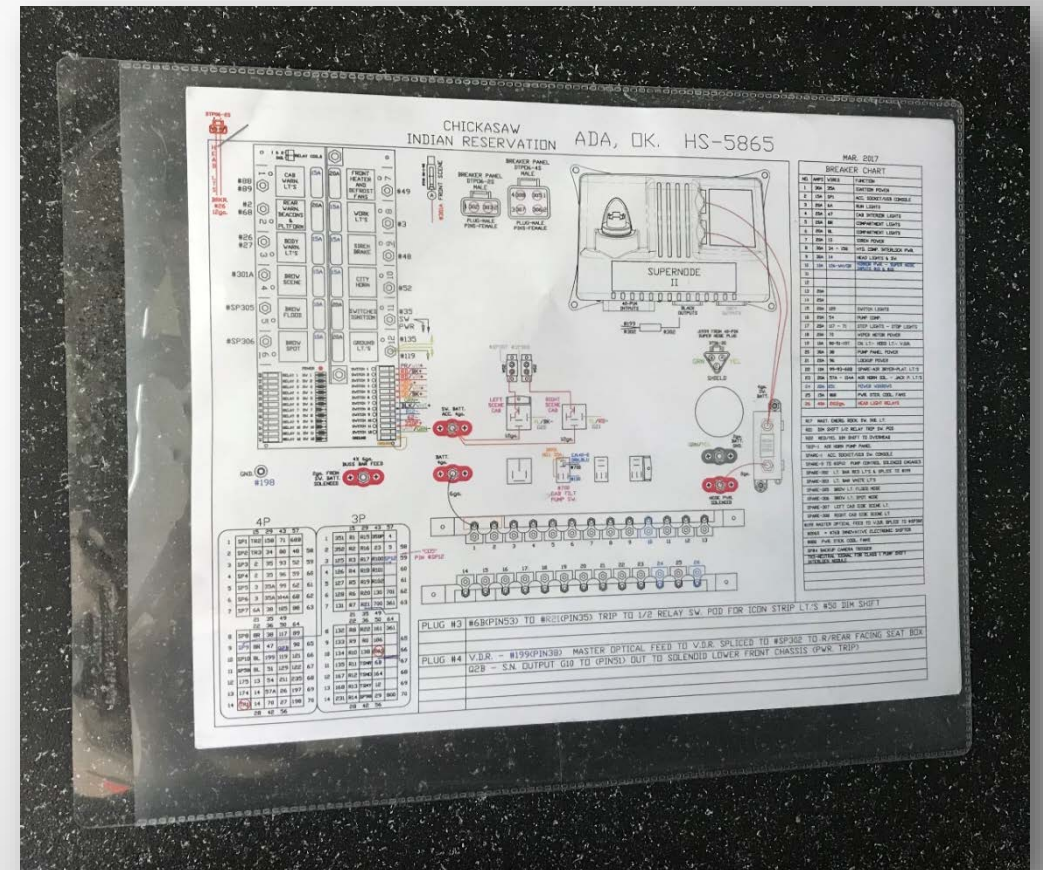
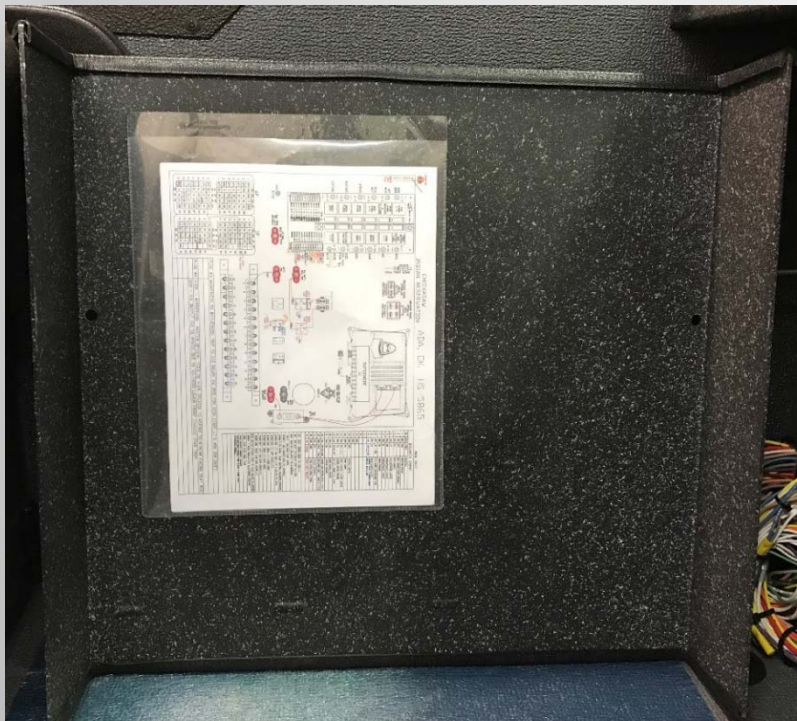
- Distribution panel is located in front of the officer behind a removable access panel.
- Programmable Class 1 Super Node II utilized for load management and switching functions.





# CAB ELECTRICAL DISTRIBUTION PANEL

- Printed electrical diagrams are provided on the back side of the removable cover for quick access.





# BATTERY BOX

- Batteries housed in a 3/16" thick 304 stainless steel cradle with compartment matting installed under batteries
- Removable aluminum lid with electrical diagrams secured to underside





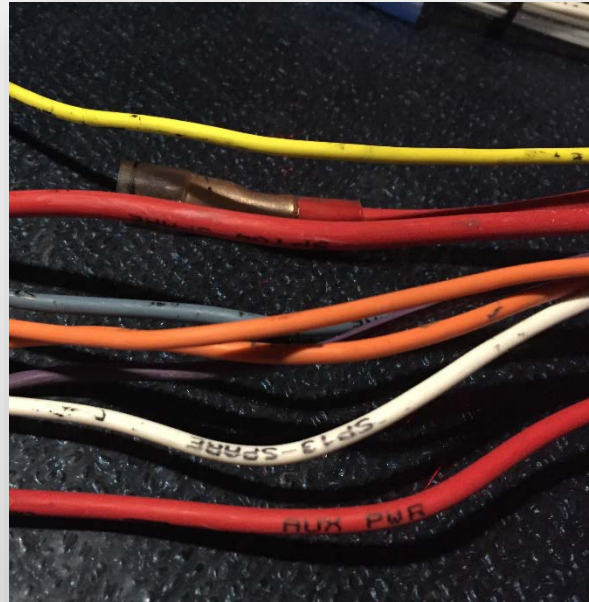


Family Owned and Operated Since 1890

# PRODUCT HIGHLIGHTS

# WIRING HARNESS

- Standard point-to-point electrical system
- Color coded wiring labeled every 3" with function
- Heat-resistant loom and terminated with Deutsch connectors





# BATTERY CHARGER MOUNTING IN CAB

- Battery charger and air compressor (optional) are stored inside the cab in a vented compartment (not exposed).
- Units are plugged into a 120V receptacle for easy service.

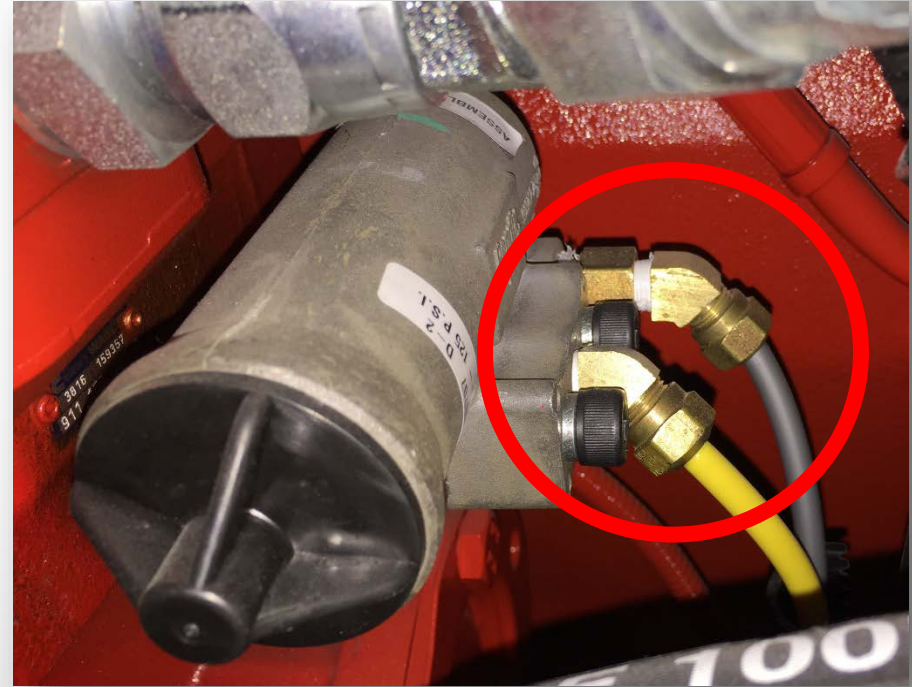


- Air compressor has an automatic drain routed through the wheel well.



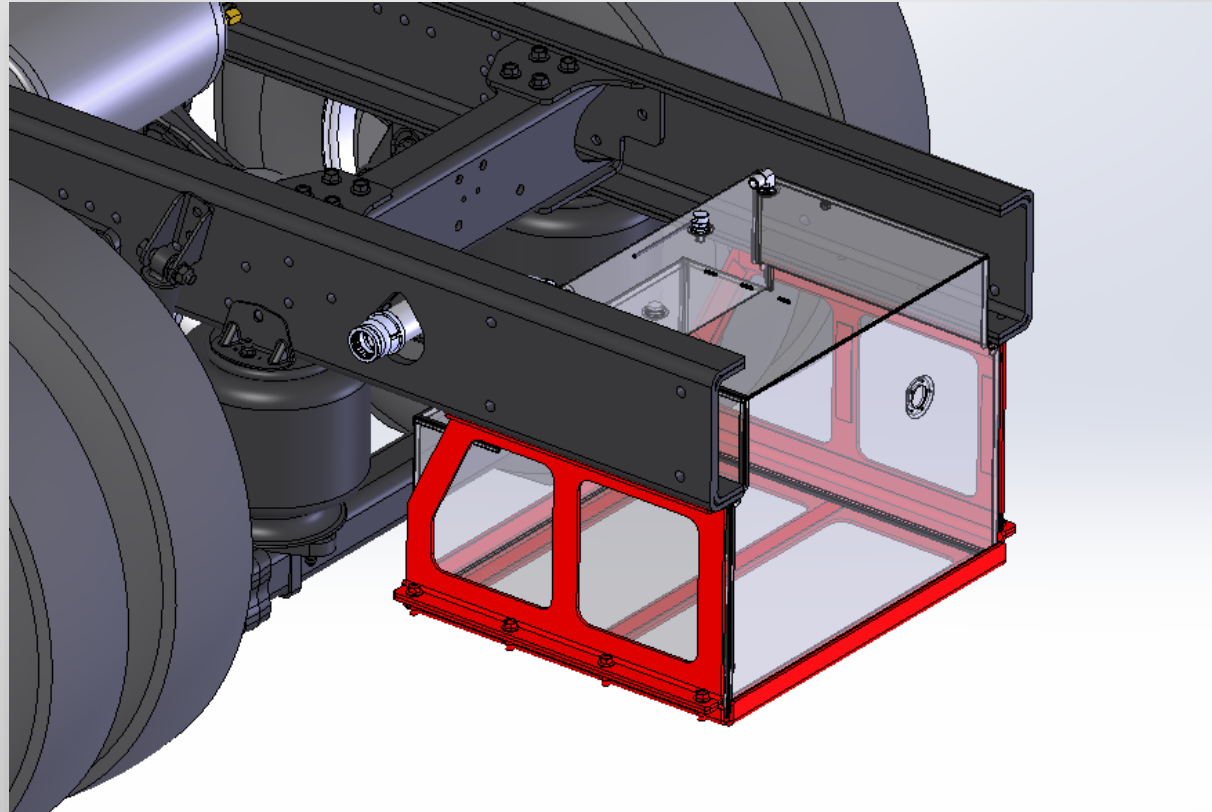
# COMPRESSION STYLE AIR FITTINGS

- Compression fittings are **STANDARD** for all air line connections (wherever possible).



# FUEL TANK CRADLE

- Fuel tank is supported by a 1/4" thick steel cradle (not with straps).



# STAINLESS STEEL CAB DOOR PANELS

- Full 304 brushed stainless steel cab door panels are **STANDARD** on all Sutphen custom chassis.
- Multi-piece door panels with removable access panel over latch mechanism for easy service without removing the entire door panel.





# STAINLESS STEEL HANDRAILS

- Stainless steel handrails are **STANDARD** for all exterior locations on all products (coat hook optional).



# OFFICER'S SPACE

- The officer's seat is located as far rearward as possible to maximize space for the officer and increase driver visibility.





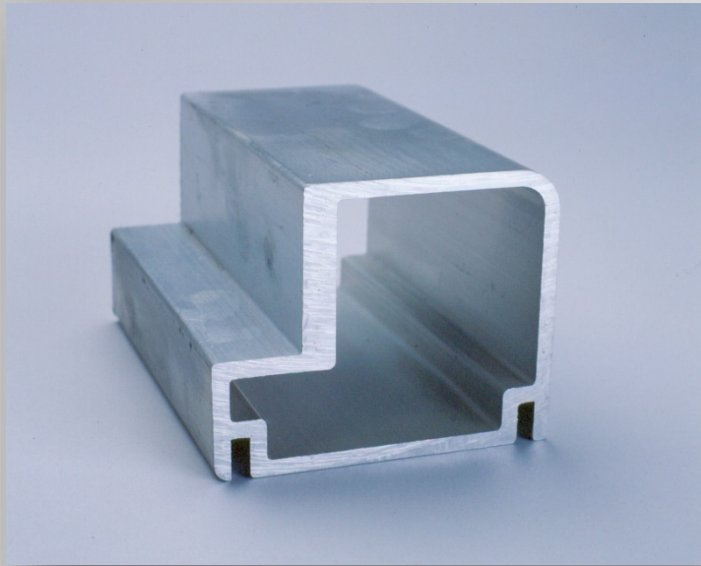
# CORROSION PREVENTION (HARDWARE)

- Stainless steel fasteners are pre-coated with Threadlocker and nylon under the heads to minimize corrosion.
- This nylon coating acts as a barrier between the fastener head and the metal or painted surface.





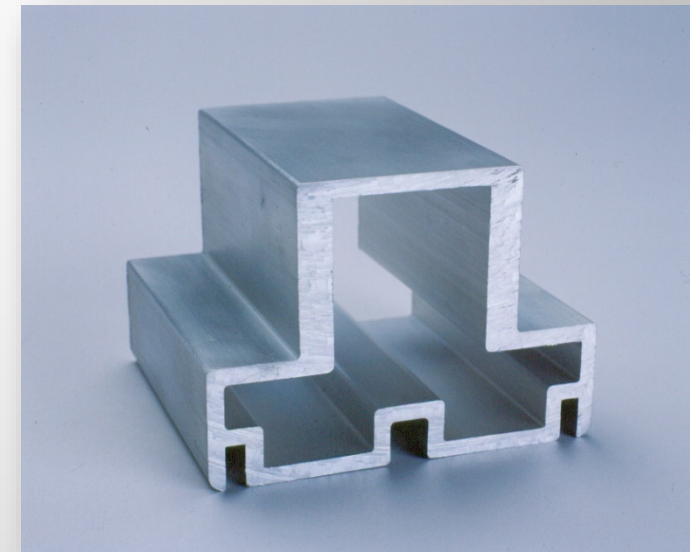
# EXTRUDED ALUMINUM PUMPER BODIES



BODY CORNER EXTRUSION  
UP TO 3/8" THICK WALL

- Framework constructed from 6061-T6 custom aluminum extrusions up to 3/8" thick - 3/16" thick 5052-H32 aluminum compartment walls, floors and ceilings

- Over 20 standard bodies to choose from or fully customize to your specific needs



BODY DOOR POST EXTRUSION  
UP TO 3/8" THICK WALL

# 304 STAINLESS STEEL AERIAL BODIES

- All aerial apparatus bodies are constructed from 304 14-gauge stainless steel.
- Main body support structure is constructed from 304 stainless steel structural components.
- Body compartments are bolted together with stainless steel fasteners and secured to the body support structure with stainless steel Huck® fasteners.





# HUCK® LOCKBOLT FASTENERS (AERIAL)

- Used to assemble aerial device instead of welding
- Allows for thinner extrusions and overall lighter weight
- Can be field replaced for shorter out-of-service time
- Huck fasteners do not require torquing and will not work loose (maintenance free)



# HUCK® LOCKBOLT FASTENERS (AERIAL)

