



# SUTPHEN

*Family Owned and Operated since 1890!*





# EAST FACILITY IMPROVEMENTS

- Improved tooling and equipment
- Expanded on site outdoor storage
- New pavement for our service entrance
- Updated graphics and engineering software and hardware
- Improved employee retention



# PRODUCTION OUTPUT

- Improved scheduling process with fine tuning adjustments for complexity of build
- Greater commitment to goal hours and meeting schedules by all team members
- Maximized sub assembly and bay output capabilities
- Moved pump testing to on site



# PROCESS ENHANCEMENTS

- Expanded teams: purchasing, graphics, paint and body departments have all grown
- Added an Engineer to our team
- Ensuring chassis are on site, on time
- Improved forecast of material needs
- Bulk ordering
- Min / Max inventory process in place





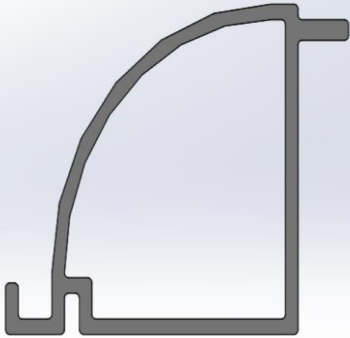
# PRODUCT DEVELOPMENT

## Heavy Rescues




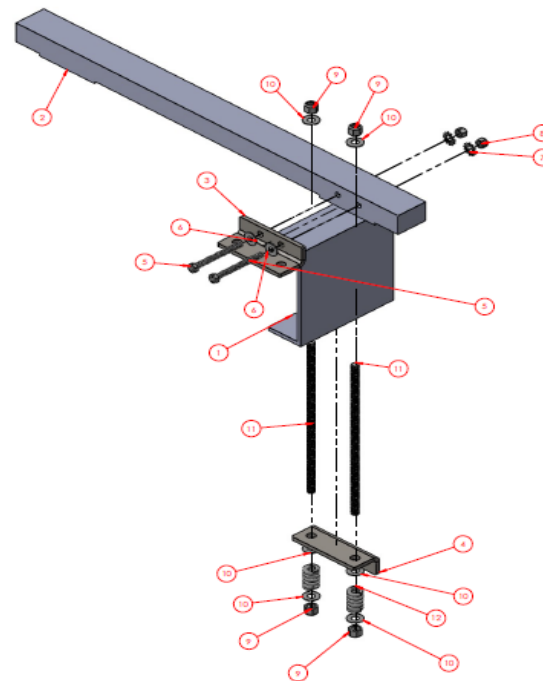
# RESCUE HIGHLIGHTS

Extruded upper body to match cab





## Spring mounted body



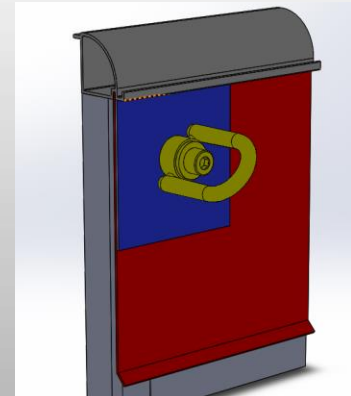
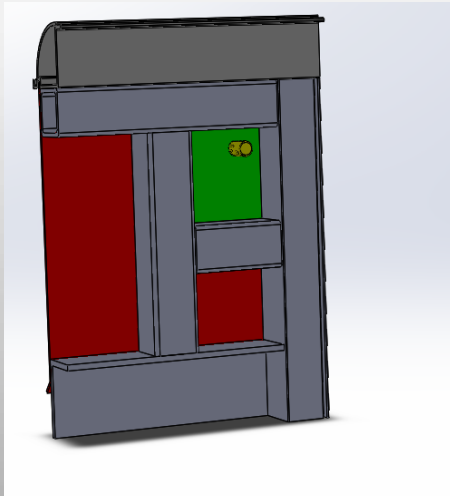
**ASSEMBLED VIEW**

[illegible]



# RESCUE HIGHLIGHTS

- Tested and NFPA compliant rope anchor tie offs
- Tested and NFPA compliant winch receivers

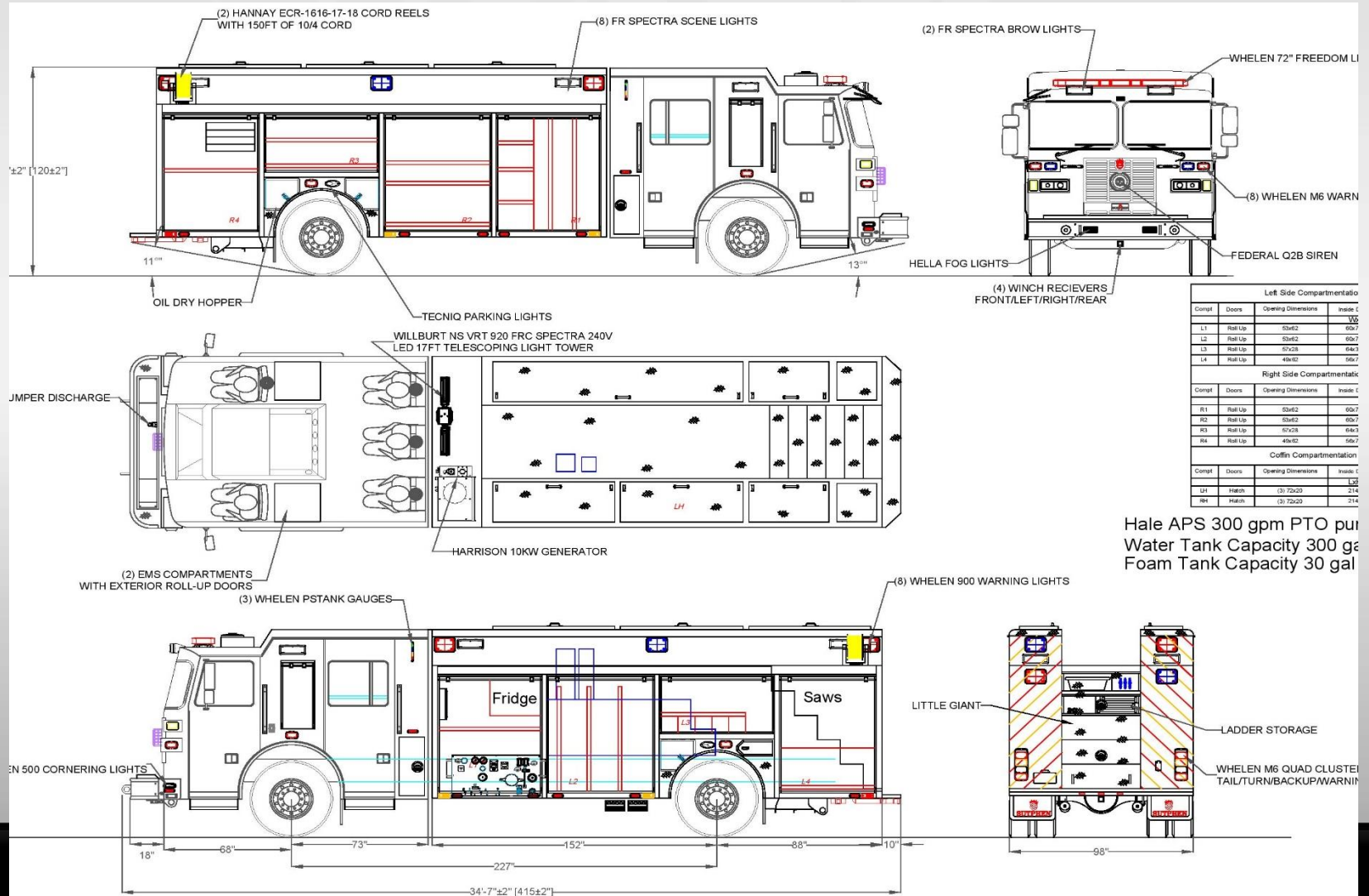


# RESCUE HIGHLIGHTS

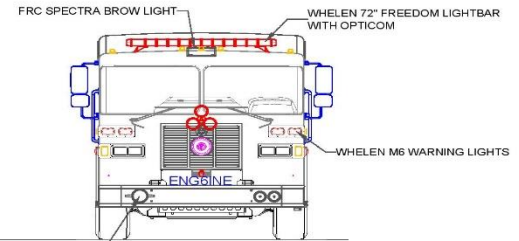
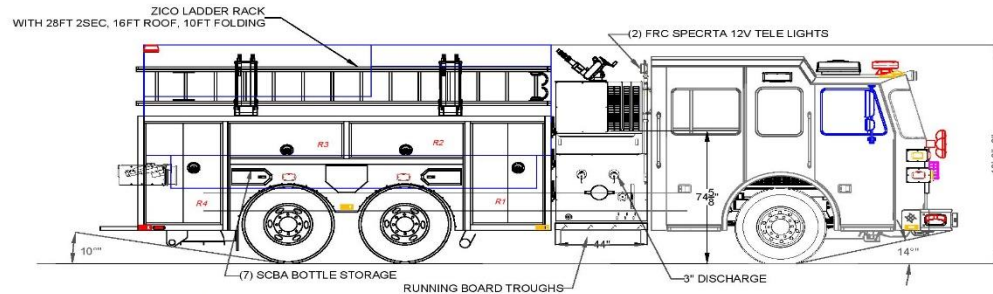
Innovative rear staircase design with ergonomic access and multi functional storage opportunities



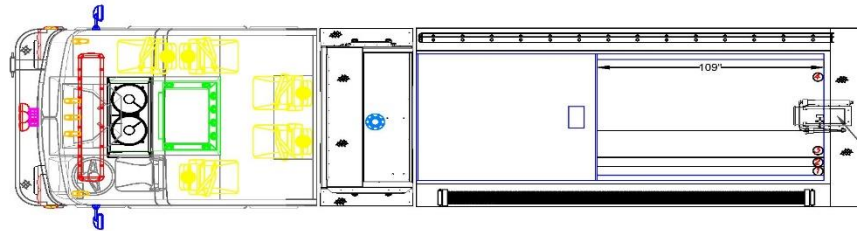
# PUMP AND WATER OPTIONS



# TANKER HIGHLIGHTS



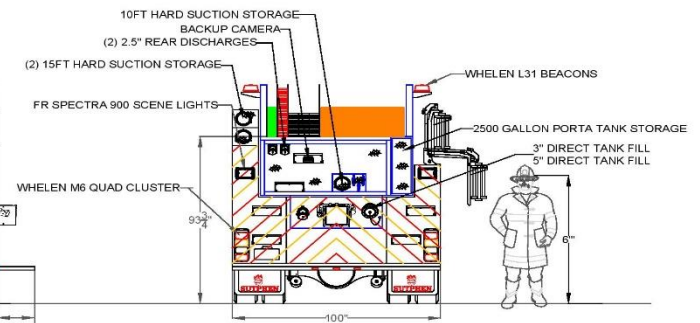
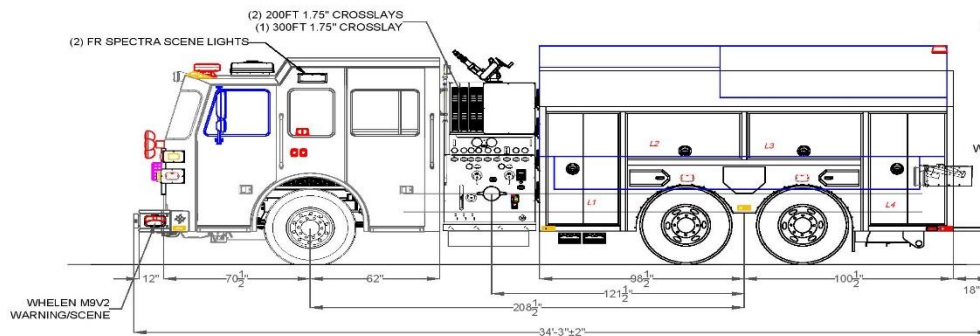
5" FRONT SUCTION



| Left Side Compartmentation  |        |                    |                   |            |
|-----------------------------|--------|--------------------|-------------------|------------|
| Comp                        | Door   | Opening Dimensions | Inside Dimensions | Volume     |
| W01R2                       |        |                    |                   |            |
| L1                          | Hinged | 33x58              | 40x58x24 25/13/25 | 27.7 CU FT |
| L2                          | Hinged | 33x58              | 38 25x24x10/25    | 18.0 CU FT |
| L3                          | Hinged | 55x14              | 55 25x10x10/25    | 10.0 CU FT |
| L4                          | Hinged | 33x58              | 42x58x24 25/13/25 | 28.0 CU FT |
| Right Side Compartmentation |        |                    |                   |            |
| Comp                        | Door   | Opening Dimensions | Inside Dimensions | Volume     |
| R1                          | Hinged | 33x58              | 40x58x24 25/13/25 | 28.2 CU FT |
| R2                          | Hinged | 55x13              | 55 25x24x10/25    | 7.8 CU FT  |
| R3                          | Hinged | 33x58              | 38 25x24x10/25    | 7.8 CU FT  |
| R4                          | Hinged | 33x58              | 42x58x24 25/13/25 | 27.8 CU FT |

Hale Qmax 1500 single stage  
Water Tank Capacity 2500 gal

Total Volume  
148.4 CU FT



DIMENSIONS SHOWN ON THIS DRAWING ARE APPROXIMATE AND ARE SUBJECT TO MINOR DEVIATIONS DURING CONSTRUCTION.  
IN THE EVENT OF A DISCREPANCY BETWEEN THE SUTPHEN SPECIFICATIONS AND DRAWING, THE SUTPHEN SPECIFICATIONS SHALL PREVAIL.  
DRAWING IS FOR REFERENCE ONLY. SOME ITEMS PROPOSED MAY NOT BE SHOWN OR NOTED.

CUSTOMER APPROVAL

NAME: \_\_\_\_\_  
TITLE: \_\_\_\_\_  
DATE: \_\_\_\_\_

| REV | DESCRIPTION | BY | DATE |
|-----|-------------|----|------|
|     |             |    |      |

DRAWN BY:  
J. GORDON  
DATE:  
07/08/2020  
DWG FACILITY:  
SUTPHEN EAST  
LAKE ARIEL, PA

SUTPHEN EAST  
55 INNOVATION DRIVE  
LAKE ARIEL, PA  
1-844-776-2669  
UNION TOWNSHIP FIRE CO.  
WINFIELD, PA  
CUSTOM WETSIDE ALUMINUM TANKER  
SALES DRAWING

THIS PRINT IS PROVIDED ON A RESTRICTED BASIS AND IS NOT TO BE USED IN ANY WAY DETRIMENTAL TO THE INTEREST OF SUTPHEN CORPORATION.



# TANKER HIGHLIGHTS

Protective clear vinyl behind the porta tank storage



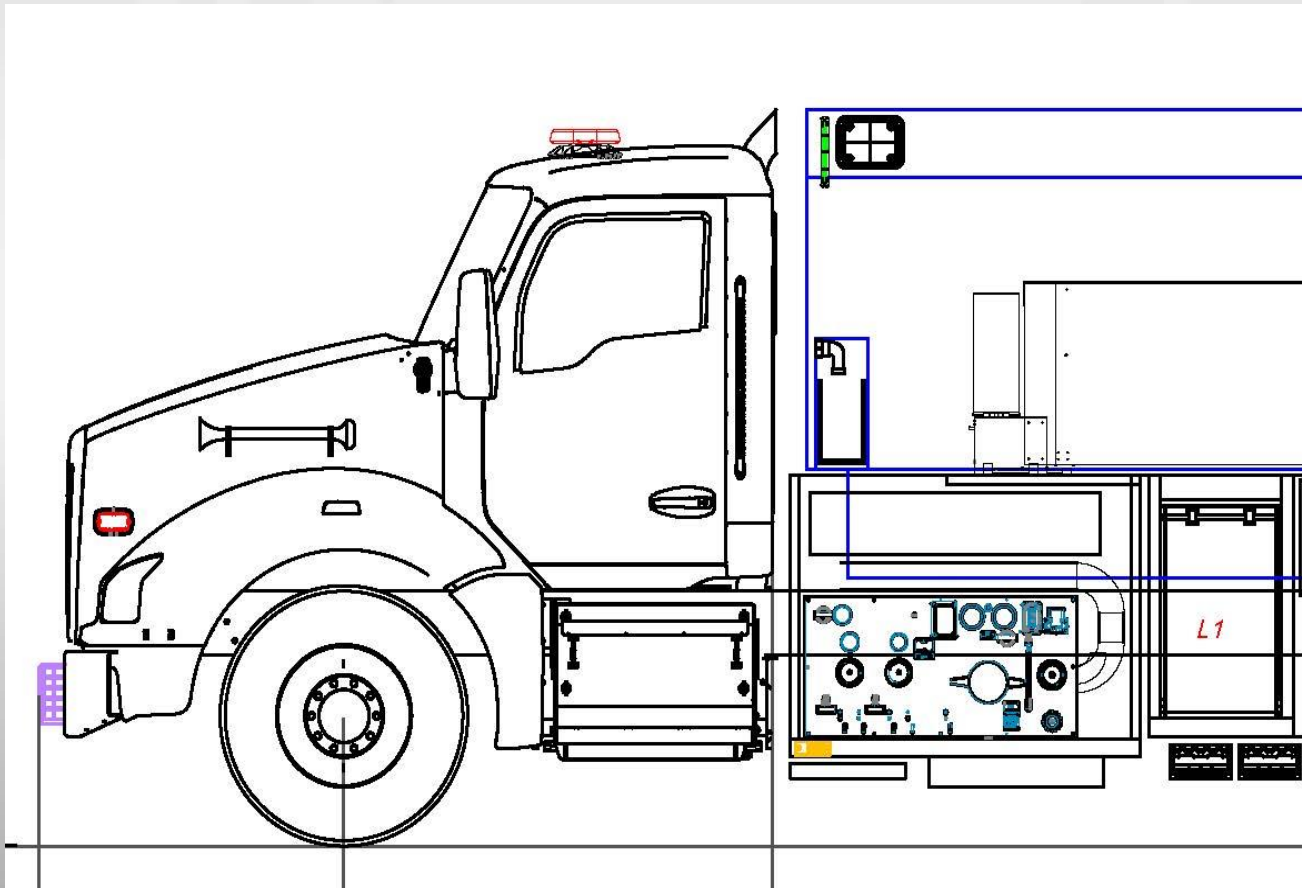
# TANKER HIGHLIGHTS

Booster reel under rear dump



# TANKER HIGHLIGHTS

Integrated speedlays or crosslays over side kick pump





# TANKER HIGHLIGHTS

Kenworth T-880 widely being used





**Thank you for all the orders!**

Point Pleasant, NJ  
Bethel Tate, OH  
Rochester, IL  
Vera Beach, FL  
Clinton Twp., PA

Miami Dade, FL (2)  
Palm Beach, FL  
Lindsay, OK  
West Monroe, NY  
Athens, PA  
Watertown, NY  
Cashtown, PA  
Vernon, NJ

Union Twp, PA  
Jefferson Monroe, IA  
Union Grove, NC  
Uniontown, OH  
Claremont, NH  
Hillsborough, NC  
Northville, NY  
Bowerstown, OH



# SUTPHEN

***Family Owned and Operated since 1890!***

Sotckport, NY  
N. Greenbush, NY (2)  
Wenham, MA  
Freeburg, IL  
Clinton Twp, OH

Marion, OH  
Waymart, PA  
Calera, AL  
Germania, NJ

Chatham, NJ  
North Creek, NY  
Laconia, NH  
Dorrance Twp, PA

Tilton, NH  
Ida, MI  
Little Falls, NY  
Mifflinburg, PA

