

## Cummins Onan hydraulic generators

Superior performance and VFD compatibility



RBAB Spec D hydraulic generator set



### **Precise frequency control improves performance**

Cummins Onan's new RBAB Spec D hydraulic generator set and pump system provides advanced frequency stability in critical emergency conditions. Its innovative pulse pick-up sensor and dual-valve fluid control system enable consistent voltage output, regardless of vehicle engine speed or equipment loads. This eliminates frequency surging and subsequent voltage fluctuations that can impact scene lighting.

### **Best-in-class VFD equipment compatibility**

When the situation calls for maximum equipment capacity from variable frequency drive (VFD) fans and tools, rescuers need a generator that is equal to the task. The new hydraulic generator set's innovative pulse pick-up sensor and digital control technology are impervious to load-based feedback and ensure VFD compatibility in all equipment types.

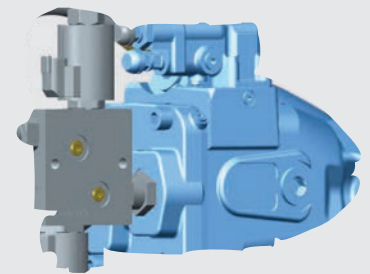
# Five new hydraulic generator set models

Hydraulic generator sets are available in 50 and 60 Hz models and must be paired with one of 13 new hydraulic system pumps.

Model Name	Model Number	Power	Frequency
6RBAB-2010D CommercialHG	A051A281	6 kW	60 Hz
8RBAB-2010D CommercialHG	A051A286	8 kW	60 Hz
8RBAB-50-2010D CommercialHG	A051A287	8 kW	50 Hz
10RBAB-2010D CommercialHG	A051A289	10 kW	60 Hz
15RBAB-2010D CommercialHG	A051A288	15 kW	60 Hz

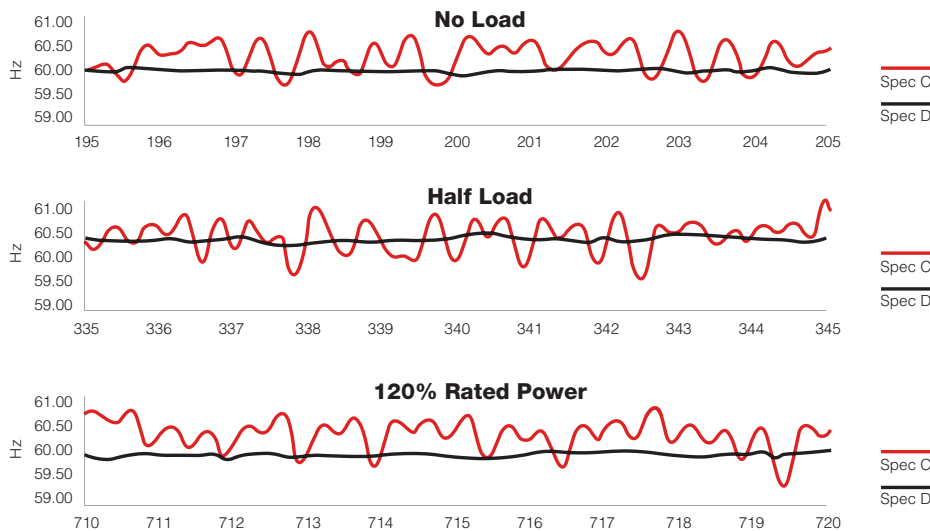
## Spec D Hydraulic Pump

Dual-valve pump manifold and fluid control system enable finite frequency control.



## Advanced frequency stability, regardless of load

Spec D RBAB models were tested in a variety of conditions to evaluate frequency stability. From no load state to an excess of 100 percent of rated power, these new hydraulic generators eliminate surges and maintain a consistently steady frequency.



## Up-fit for Spec A–C generators

Cummins Onan offers a conversion kit to up-fit Spec A–C generators and pumps into the dual-valve configuration. Up-fit conversion kits include Spec D components:

- Dual-valve pump manifold
- Pulse pick-up sensor and digital control
- Motor
- Harnesses for valves, sensor and digital control

**Performance you rely on.™**

[power.cummins.com](http://power.cummins.com)

Cummins®, Onan®, the "C" logo, and Performance you rely on™ are trademarks or registered trademarks of Cummins Inc. ©2015 Cummins Power Generation. All rights reserved.

Bulletin 5410909 NASB-6063-EN (03/15)

**Cummins Onan**

