



Family Owned and Operated Since 1890

CLEAN CAB (Roundtable)

Guy Lombardo &
Justin Howell

Why Clean Cab?

- Fire Service is said to have a 30% higher incidence of cancer than the general public.
- A response to this fact is why the movement



What is Clean Cab?

- No NFPA guidelines....yet.
- No defined product because we react and customize the product to each department's needs.

SFEV

WE DO NOT TRY TO “SELL” CLEAN CAB.

WE RESPOND TO REQUESTS OR INQUIRES AND EXPLAIN
WHAT SUTPHEN HAS TO OFFER AND EXPERIENCED.

Considerations

SURFACES

- Most of our surfaces are acceptable.
 - Doors, center console, dog house, etc.
- Headliner can be made to be a solid surface
- Flooring can be made most durable and washable with treadplate

Surfaces



Surfaces



Considerations

SEATS

- Bostrom Durawear can be cleaned. It has a vinyl backing.
- Bostrom also offers ZIP OFF covers for cushion and seat back
- VALOR Seats are equipped with their VALOR TechXD (Extreme Durability) Upholstery
 - Sealed back to prevent moisture from getting to the foam and treated with an anti-microbial.

Seats



Seats



Considerations – cont.

AIR QUALITY

- Air Filtration system
 - MERV 8 washable filter as standard on all custom chassis.
- Windows up programing- When pump engaged, windows close.
(obviously need electric opt)
 - 11031425 CAB DOOR WINDOWS,
POWER W/AUTO ROLL-UP,
WHEN PUMP IS ENGAGED



Considerations

GEAR

- Most departments in FL either have 2 sets or moving toward that
- What to do with contaminated gear?

Considerations

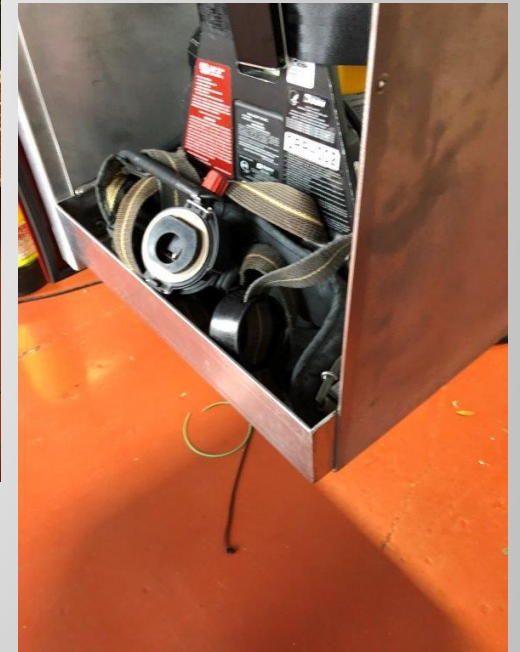
SCBA STORAGE

- Most complicated consideration- Options- SFEV
- Put in body compartment- Not a great option
- Use exterior compartments on 73" cab
 - 38" standard compartments with slide out trays (pic)
 - 80" exterior cab compartments with SCBA brackets (pic)
- Decon Equipment/gear- either on scene or back at quarters and return to cab
- Hot water at pump panel to clean gear and equipment
- New technology SCBA cleaning machines

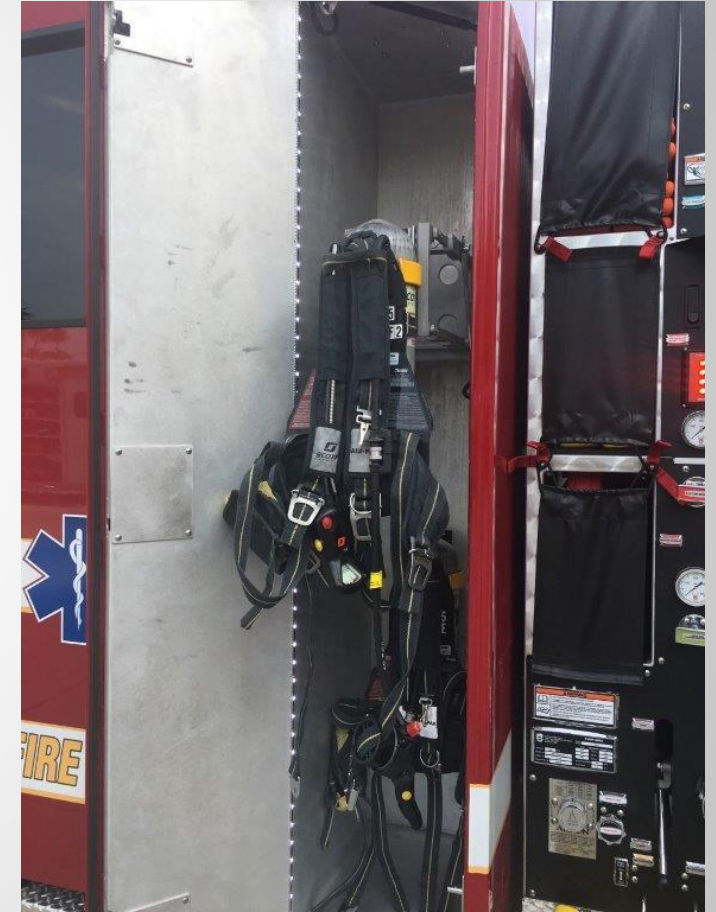
Gear



Gear



Exterior Cab Compartments



Exterior Cab Compartments



Considerations

PUMP MODULE STORAGE

- Consider option 75041020 COMPARTMENT AHEAD OF PUMP, TRANSVERSE (BELOW CROSSLAYS/SPEEDLAYS)
- This allows for additional storage outside of the cab located in the pump module.
- A slide outs can be installed to have an isolated storage locker for gear, SCBA packs, tools, etc.

Pump Module Storage

