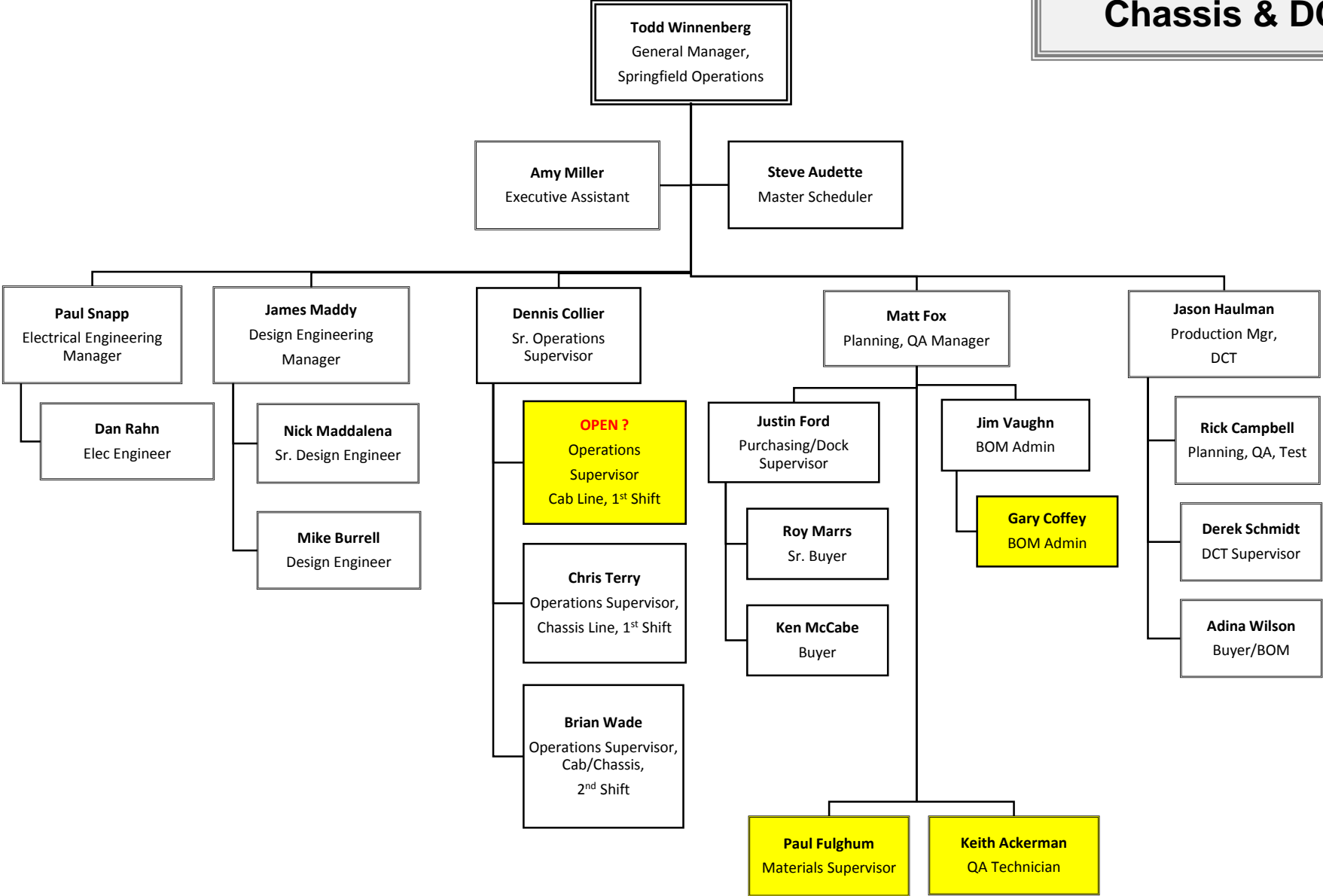




## Springfield Division Update



# Springfield Division: Chassis & DCT





## **Upcoming Chassis Production Improvements**

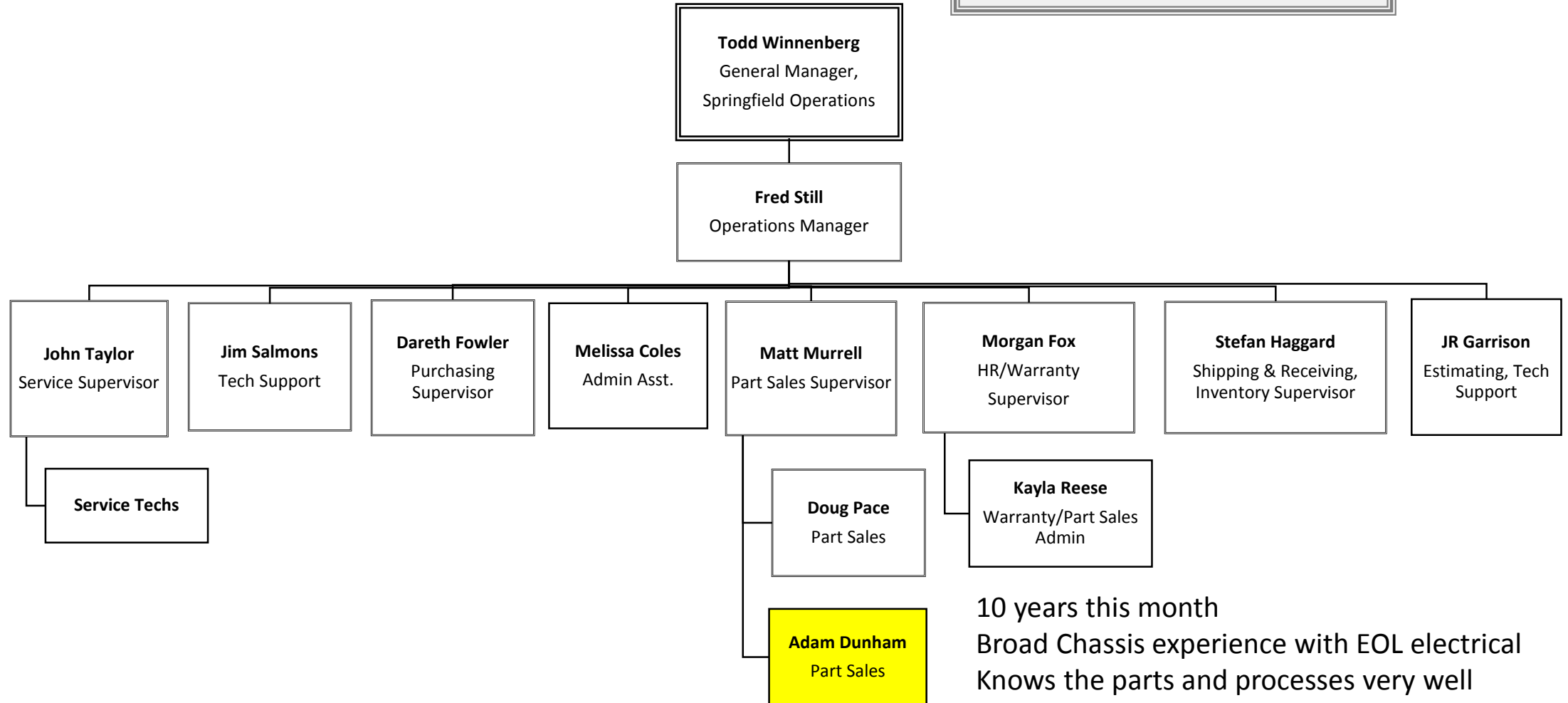
- **Adding capacity to increase output to 18 chassis per month.**
- **Adding capacity to increase Program 1/Guardian output to 4 units per month.**
- **Implementing formal inventory management position to control inventory levels, usage, transactions which will improve accuracy and availability.**



## **Upcoming Chassis Production Improvements**

- **Quality and Process System Update**
  - **Keith Ackerman**
  - **Updating all QA and process books**
  - **Cross Training**
- **Adding capacity to increase Program 1/Guardian output to 4 units per month.**
- **Implementing formal inventory management position to control inventory levels, usage, transactions which will improve accuracy and availability.**

## Springfield Division: Service & Parts



10 years this month

Broad Chassis experience with EOL electrical  
Knows the parts and processes very well  
Can help with tech support or on floor if needed  
Should become productive quickly



## **Parts, Service & Warranty Improvements**

- Added Melissa Coles to the administrative team to expedite invoicing, credits, etc.
- Adding 1 person to part sales to increase capacity to provide faster, more accurate assistance...**Adam Dunham**
- Adding 1 service technician to increase capacity.
- Broadening Kayla Reese's responsibilities to provide administrative support for Morgan Fox.
- Implementing formal inventory management position to control inventory levels, usage, transactions which will improve accuracy and availability.